



16<sup>th</sup> ANNUAL  
*Spring of*  
**OPPORTUNITIES**  
*Sale*



FEATURING TOP 1% WAGYU GENETICS

**ELEVATE**

*your program  
your product  
your future*

**16 MARCH 2024**  
STIGLER, OK







# WELCOME

Welcome to our 16<sup>th</sup> Annual Spring of Opportunities Sale!

The sale this year features a powerhouse of Japanese Black Wagyu genetics from the heart of our herd. We are offering as our feature lots the opportunity to purchase two top heifers born in 2023 out of the highly sought after multi-trait Top 1% **TBR HIKOKURA 035 3025Z** paired with the breed's legendary sires, **MAYURA L0010** and **SUMO MICHIFUKU F154**... donor prospects that will change your program in a major way! Second, we included an elite set of bred and open heifers including some great donor cow prospects. The sires on the breds include **TBR SHOGUN** (sold in last year's sale for \$325,000), **ARUBIAL UNITED**, **ARUBIAL BOND**, **TBR SHIGENAMINAMI**, and **TF ITOHANA 2**. Third, we are offering a flush out of a famous 100% TAKEDA BRED donor cow, **TBR HIKOFUJINAMI 7 6764G**, sired by **TF ITOSHIGEFUJI 147** over **CF502**. Fourth, the offering includes recip pregnancies with sires **TBR SHOGUN**, **ARUBIAL BOND** and **ARUBIAL UNITED** from some of our top donor cows. In addition, we are offering a great set of range ready and junior bulls for both fullblood and F1 production, including choice pick of a top AI sire prospect out of **3025Z** and **F154**. We have added 10 semen lots from our Triangle B herd sires plus some key bulls we use in our breeding program. Last, we are offering an embryo lot from one of our elite donor cows. When we put the sale group together, we tried to select lots that will work for any program. There are some great buying opportunities in this auction.

We have been fortunate to sale 100% Fullblood Japanese Black Wagyu cattle, genetics, and beef over the last 17 years. We honestly believe the cattle have gotten better every year, and we have made tremendous genetic improvement as demonstrated in our seedstock and through our beef program. We are continuing to improve our program as we keep our focus on pedigrees, phenotypes, and EBVs. This year we incorporated carcass ultrasound through Cup Lab as another tool in our program. The majority of the sale animals were included in the evaluation. We have no doubt that this is the best offering to date with data to back it up!

This year has had its challenges with first the drought and then the rain and the mud. However, the cattle have performed well, and they are looking really good! We really appreciate all the people who have helped us get ready for the sale, and, most importantly, our customers and friends who make it possible for us to live the dream!

This is truly a Spring of Opportunities Sale! Study the catalog, watch the videos, and come view the cattle. Feel free to contact us with any questions. The good ones are here in this sale. We hope you will join us on March 16th at 12 Noon for lunch. The sale will begin at 1:30 PM. If you can't make it sale day, you can register early and bid online at [www.LIVEAUCTIONS.TV](http://www.LIVEAUCTIONS.TV).

Thank you,

Don and Leah Brown  
Triangle B Ranch  
[DON@TBRWAGYU.COM](mailto:DON@TBRWAGYU.COM) | 918-471-5939  
[WWW.TBRWAGYU.COM](http://WWW.TBRWAGYU.COM)

## TAKE A LOOK

CATTLE ARE AVAILABLE FOR VIEWING AND INSPECTION AT THE RANCH NOW UNTIL THE SALE BEGINS. (PLEASE CALL TO MAKE AN APPOINTMENT PRIOR TO THE SALE). MAKE PLANS TO ARRIVE IN TIME FOR A FULL INSPECTION AS CATTLE WILL NOT MOVE THROUGH A "SALE RING," AND WILL ONLY BE SHOWN BY VIDEO DURING THE SALE.



SALE MANAGED BY



530-668-1224

more info, digital catalog,  
videos & updates

WWW.JDAONLINE.COM

### SALE LOCATION

20309 E. County Rd. 1110

Stigler, OK 74462

### EVENTS SCHEDULE

#### FRIDAY, MARCH 15

1:00 pm Cattle available for viewing

6:00 pm Wagyu Hamburger Fry

#### SATURDAY, MARCH 16

9:30 am Cattle on Display

12:00 noon Lunch is served

1:30 pm



### ACCOMMODATIONS

#### Twin Lakes Inn

1810 East Main Street, Stigler, OK 74462

918-967-3700

#### Double Tree

700 Rogers Ave, Ft Smith, AR 72901

479-783-1000

#### Candlewood Suites

161 N 32nd St, Muskogee, OK 74401

800-494-7195

CANT MAKE IT? - BUYING INTERNATIONALLY? *Bid Online*



#### HERE'S HOW IT WORKS

Go to [www.LiveAuctions.tv](http://www.LiveAuctions.tv). Please note that you do NOT need an account to watch the auction, but you do need to register an account and request a buyer number if you wish to bid. If you have not created a new account since September 1<sup>st</sup>, 2020 you will need to click "Register" in the top right corner of the homepage and create a new account. Once you have completed the form on this registration page and hit the "Register" button you will receive an e-mail with a place to click on to verify you have entered a valid e-mail address. Once you have completed this registration process, find the auction you are interested in on the homepage and click on it (sales are listed in chronological order). You should then see a box that says Login. Now that you have an account with LiveAuctions just type in your E-mail Address and Password. You will now see a hyperlink at the top that says "Request a Buyer Number". The first time you request your first buyer number on LiveAuctions it will send you a text message with a verification code in it. Type the code from the text message into the area requiring it and you will then see your name along with a buyer number listed at the top of the webpage where the live video is and you will be able to bid. You will only have to complete this two-step verification process one time. After that you will be able to immediately request a buyer number on any auction without verification through an e-mail or text message again.

LiveAuctions no longer requires an app. If you wish to view/register/bid on a smartphone just type LiveAuctions.tv in whatever web browser you use. The registration process is the same as it is on a desktop computer, but the website is built mobile friendly. Click on the three lines in the top right corner to access the menus.

Bidders who are successful in making purchases will be contacted by the ranch after the auction to settle payment and discover your shipping plans.

If you need help registering to bid or to view the auction please call Technical Support at (682) 816-4900 or e-mail us at [TechSupport@LiveAuctions.tv](mailto:TechSupport@LiveAuctions.tv).

# 16<sup>th</sup> ANNUAL *Spring of* **OPPORTUNITIES** *Sale*

16 MARCH 2024 AT THE RANCH STIGLER, OK

### SALE DAY CONTACTS AND EVENT TEAM

Mercedes Danekas-Lohse	JDA, Inc.	916-849-2725
Sherry Danekas	JDA, Inc.	916-768-1431
Don Brown	Triangle B Ranch	918-471-5939
C.D. "Butch" Booker	Auctioneer	509-989-2855
Mariah Miller	LiveAuctions.tv	712-294-4731
Guy Peverley	The Stock Exchange	785-456-4390
Colton Pratz	OK Cowman Magazine	405-385-1054

*please contact any of the above contacts for assistance*

### LIABILITY

All persons attending the sale and related functions do so at their own risk. James Danekas & Associates, Inc., its employees, all sale representatives, plus all Triangle B Ranch and all facility representatives assume no liability, legal or otherwise, for any accidents, damages, or injuries that may occur.

### SALE TERMS

- All sales are final. Each animal will be at the purchasers risk immediately after it is sold. Purchased Items must be paid before shipment can be made unless prior arrangements are made with the sale management.
- All attendees wishing to participate in the sale must be registered with the sale management and must obtain a buyers number.
- Absentee buyers & internet buyer payments can be wired to the sale management's custodial account before cattle are released to the buyer.
- All lots become the buyer's risk once purchased. After purchase, all costs are the buyer's responsibility. All costs for exporting lots are the buyer's responsibility.

### HEALTH

The health of the cattle selling is excellent. Each animal will be accompanied by an individual health certificate for immediate interstate shipment. All bulls have passed a breeding soundness exam and have been tested for trichomoniasis. Cattle sold as bred have been palpated for pregnancy or have had a positive blood test for pregnancy. Cattle selling as open are guaranteed to be open.

### SUPPLEMENT INFO & SALE ORDER

Any errors, updates, or changes in information contained in this catalog will be announced from the auction block and included in a supplement sheet on sale day. Announcements from the block take precedence over the catalog and any prior released information. The sale will be sold in catalog order or in sale order that will be available prior to auction.

### TRANSPORTATION

Triangle B Ranch is located approximately 2 hours from the Tulsa International airport, or 3 hours from Will Rogers World Airport in Oklahoma City. Triangle B Ranch is also 1 hour from the Fort Smith Regional Airport.

### HAULING

Recommended haulers are:  
Lathrop Trucking 847-426-5009  
Stacy Soppr 515-250-3080

All costs involved with shipment is the buyer's responsibility and the buyer is responsible for making arrangements.

*\*All live lots have been registered with both the Australian & American Wagyu Registries*

*\*All females are sold with a breeding guarantee*



New This Year

# Live Carcass Ultrasound Data



On January 26, 2024 the majority of the offering, regardless of age, underwent ultrasound for further carcass information. This allows us to see the current state of the carcass and within this offering; the focus is on Intermuscular Fat (**IMF**) and Ribeye Area (**REA**).

As a marbling breed we feel that the IMF is as important factor as any to breed for and improve upon. With ultrasound, **IMF at 9 or above is USDA Prime**. Many of these two year old heifers are already at an IMF of 9 or higher while normally Wagyu marble out at 30-36 months of age.

When we look at the RBA it is important to note that the ribeye is a good indication of total carcass muscle. Generally, an average beef steer has approximately 1.1 square inches of ribeye area per 100 pounds live weigh. For example, a 1000 lb. steer should have an 11 sq. inch ribeye. The normal range is 10-18 sq. inches with an average of 12.6 for an 1150 lb. steer and 11.6 for an 1150 lb. heifer.

The results posted in this catalog will be added to each animal's data at the breed registry to incorporate further information which may enhance the current EBVs listed in this catalog. These results will be made available prior to sale day through the sale source and online platform.

## EBVs

The listed EBVs in this catalog are sourced from the Australian Wagyu Association February 2024 - Run 2



# TBR HIKOKURA 035 3025Z PROGENY

DIRECT PROGENY OF THE \$400,000 VALUED DONOR  
& maternal sibling to the \$400,000 2023 top selling female  
& the \$325,000 1/2 interest top selling bull

LOT 1



## TBR HIKOKURA 035 8124L

SIRE MAYURA L0010

MAYURA ITOSHIGENAMI JNR  
MAYURA H0159ITOSHIGENAMI  
MAYURA DAI NI KINNTOU 1  
MAYURA ZULU  
WAGYU GENETICS AIZAKURA D8371

DAM TBR HIKOKURA 035 3025Z

WORLD K'S SHIGESHIGETANI 1593  
IWG MS ITOSHIGENAMI 035XWORLD K'S HARUKI 2  
WORLD K'S SUZUTANI  
ITOSHIGENAMI  
CF 504

	TRIF23U8124L / FB107807					3/26/2023			FREE					FULLBLOOD BLACK HORNED					ULTRASOUND	
	GL	BW	200 Day	400 Day	600 Day	MCW	Milk	SC	CW	EMA	RF	RBY	MS	MF	WBI	SRI	FBTI	F1TI	IMF	RIBEYE AREA
EBV	-0.6	+1.3	+14	+23	+31	+26	-1	-0.1	+30	+7.0	-1.8	+1.0	+3.1	+0.33	\$298	\$316	\$283	\$267	3.66	7.3
AVG	-0.1	+1.2	+11	+18	+24	+24	+0	-0.2	+20	+2.7	-0.3	+0.2	+1.2	+0.20	\$171	\$196	\$198	\$215		

### SELLS OPEN

**TBR HIKOKURA 035 8124L** is sired by **MAYURA L010**, a direct son of **MAYURA ITOSHIGENAMI JNR**, paring genetics by **TAKEDA** standout sire **TF148 ITOSHIGENAMI** and dam **MAYURA DAI NI KINNTOU 1** with **MAYURA H0159**, herself paring genetics by **MAYURA ZULU** and **WAGYU GENETICS AIZAKURA D8371**.

**TBR 8124L's** dam is none other than **TBR HIKOKURA 035 3025Z**, with 1/2 interest selling in January 2022 for \$200,000 USD. **TBR 3025Z** is a direct daughter of **WORLD K'S SHIGESHIGETANI** and **IWG MS ITOSHIGENAMI 035X**, a direct daughter of **TF148 ITOSHIGENAMI** and **CF504**, an own daughter of **TF148 ITOSHIGENAMI** and **TF HIKOKURA 1/10**.

**TBR 8124L** is a record setting female in the World being TOP 1% for MARBLING, MARBLE FINENESS, and EYE MUSCLE AREA. In addition, **TBR 8124L** is TOP 2% in SRI at \$316, and top 1% in FBTI, F1TI, and WBI WAGYU BREEDER INDEXES. To top it off **TBR 8124L** is positive for GROWTH across the board and has a CUP LAB Ultrasound of 3.66 IMF and 7.3 REA, nice for a young female!

3025Z



L0010





# TBR HIKOKURA 035 3025Z PROGENY

DIRECT PROGENY OF THE \$400,000 VALUED DONOR  
& maternal sibling to the \$400,000 2023 top selling female  
& the \$325,000 1/2 interest top selling bull  
Lots 2 & 4

LOT 2



2

## TBR HIKOKURA 035 8123L

SIRE SUMO MICHIFUKU F154

WORLD K'S MICHIFUKU  
SUMO CATTLE CO TANI C016

MONJIRO J11550  
MICHIKO J655635  
TF TERUTANI 40/1  
TF HIKOHIME 34/3

DAM TBR HIKOKURA 035 3025Z

WORLD K'S SHIGESHIGETANI 1593  
IWG MS ITOSHIGENAMI 035X

WORLD K'S HARUKI 2  
WORLD K'S SUZUTANI  
ITOSHIGENAMI  
CF 504

TRIF23U8123L / FB107806					3/7/2023					FREE				FULLBLOOD BLACK HORNED				ULTRASOUND	
GL	BW	200 Day	400 Day	600 Day	MCW	Milk	SC	CW	EMA	RF	RBY	MS	MF	WBI	SRI	FBI	F1I	IMF	RIBEYE AREA
-0.9	+0	+8	+15	+21	+33	-7	-1	+32	+4.2	-1	+0.3	+2.5	+0.42	\$251	\$274	\$221	\$212	3.9	6.3
-0.1	+1.2	+11	+18	+24	+24	+0	-0.2	+20	+2.7	-0.3	+0.2	+1.2	+0.20	\$171	\$196	\$198	\$215		

### SELLS OPEN

**TBR HIKOKURA 035 8123L** is sired by **SUMO CATTLE CO MICHIFUKU F154**, a direct son of **WORLD K'S MICHIFUKU**, paring genetics by **MONJIRO J11550** and dam **MICHIKO J655635** with **SUMO CATTLE CO TANI C016**, herself paring genetics by **TF TERUTANI 40/1** and **TF HIKOHIME 34/3**.

**TBR 8123L's** dam is none other than **TBR HIKOKURA 035 3025Z**, with 1/2 interest selling in January 2022 for \$200,000 USD. **TBR 3025Z** is a direct daughter of **WORLD K'S SHIGESHIGETANI** and **IWG MS ITOSHIGENAMI 035X**, a direct daughter of **TF148 ITOSHIGENAMI** and **CF504**, an own daughter of **TF148 ITOSHIGENAMI** and **TF HIKOKURA 1/10**.

**TBR 8123L** is a record setting female in the World being TOP 5% for MARBLING, and TOP 4% MARBLE FINENESS. In addition, **TBR 8123L** is TOP 6% in SRI WAGYU BREEDER INDEX at \$274. To top it off **TBR 8123L** has a CUP LAB Ultrasound of 3.9 IMF and 6.3, nice for a young female!

3025Z



F154







## TBR HIKOKURA 505 8141L

SIRE MAYURA L0010

MAYURA ITOSHIGENAMI JNR  
MAYURA H0159

ITOSHIGENAMI  
MAYURA DAI NI KINNTOU 1  
MAYURA ZULU  
WAGYU GENETICS AIZAKURA D8371

DAM SYNERGY MICH HIKOKURA 505F

WORLD K'S MICHIFUKU  
SYN SYNERGY HIRA HIKO 157D

MONJIRO J11550  
MICHIKO J655635  
HIRASHIGETAYASU J2351 HONGEN  
STONYRUN SHIG HIKOKURA 15

	TRIF23U8141L / FB108267					8/26/2023					FREE					FULLBLOOD BLACK HORNED				
	GL	BW	200 Day	400 Day	600 Day	MCW	Milk	SC	CW	EMA	RF	RBY	MS	MF	WBI	SRI	FBI	F1I		
EBV	+0.8	+2.7	+14	+23	+32	+25	+2	+0.1	+23	+2.7	-0.2	+0.2	+1.5	+0.19	\$189	\$183	\$163	\$145		
AVG	-0.1	+1.2	+11	+18	+24	+24	+0	-0.2	+20	+2.7	-0.3	+0.2	+1.2	+0.20	\$171	\$196	\$198	\$215		

**SELLS OPEN - can be weaned after sale or sold with recip mother for present market value**

TBR 8141L's sire is MAYURA L010, a direct son of MAYURA ITOSHIGENAMI JNR, paring genetics by TAKEDA standout sire TF148 ITOSHIGENAMI and dam MAYURA DAI NI KINNTOU 1 with MAYURA H0159, herself paring genetics by MAYURA ZULU and WAGYU GENETICS AIZAKURA D8371.

TBR 8141L's dam is SYNERGY MICH HIKOKURA 505F, paring WORLD K'S MICHIFUKU, son of MONJIRO J11550 and MICHIKO J655635, to SYN SYNERGY HIRA HIKO 157D, daughter of HIRASHIGETAYASU J2351 and STONYRUN SHIG HIKOKURA 15.



## TBR HIKOKURA 035 8145L

SIRE MAYURA L0010

MAYURA ITOSHIGENAMI JNR  
MAYURA H0159

ITOSHIGENAMI  
MAYURA DAI NI KINNTOU 1  
MAYURA ZULU  
WAGYU GENETICS AIZAKURA D8371

DAM TBR HIKOKURA 035 3025Z

WORLD K'S SHIGESHIGETANI 1593  
IWG MS ITOSHIGENAMI 035X

WORLD K'S HARUKI 2  
WORLD K'S SUZUTANI  
ITOSHIGENAMI  
CF 504

	TRIF23U8145L / FB108271					8/25/2023					CHSC					FULLBLOOD BLACK HORNED				
	GL	BW	200 Day	400 Day	600 Day	MCW	Milk	SC	CW	EMA	RF	RBY	MS	MF	WBI	SRI	FBI	F1I		
EBV	-0.9	+1.6	+18	+26	+36	+27	+5	+0.5	+38	+3.8	-0.3	+0.1	+3.2	+0.39	\$277	\$284	\$278	\$259		
AVG	-0.1	+1.2	+11	+18	+24	+24	+0	-0.2	+20	+2.7	-0.3	+0.2	+1.2	+0.20	\$171	\$196	\$198	\$215		

**SELLS OPEN - can be weaned after sale or sold with recip mother for present market value**

TBR HIKOKURA 035 8145L is sired by MAYURA L010, a direct son of MAYURA ITOSHIGENAMI JNR, paring genetics by TAKEDA standout sire TF148 ITOSHIGENAMI and dam MAYURA DAI NI KINNTOU 1 with MAYURA H0159, herself paring genetics by MAYURA ZULU and WAGYU GENETICS AIZAKURA D8371.

TBR 8145L's dam is none other than TBR HIKOKURA 035 3025Z, with 1/2 interest selling in January 2022 for \$200,000 USD. TBR 3025Z is a direct daughter of WORLD K'S SHIGESHIGETANI and IWG MS ITOSHIGENAMI 035X, a direct daughter of TF148 ITOSHIGENAMI and CF504, an own daughter of TF148 ITOSHIGENAMI and TF HIKOKURA 1/10.

TBR 8145L is a record setting female in the World being TOP 1% for MARBLING, TOP 7% MARBLE FINENESS, and TOP 6% for MILK. In addition, TBR 8145L is TOP 5% in SRI at \$284, and TOP 1% in FBI, TOP 2% F1I, and TOP 6% WBI. To top it off TBR 8145L is positive for GROWTH. 8145L is a very good donor prospect to build a great set of cows!





# FEMALE OFFERING

LOT 5



## TBR HIKOKURA 713 7814L

SIRE **ARUBIAL UNITED P0342**

SUMO CATTLE CO MICHIFUKU F126  
MACQUARIE WAGYU C1624

WORLD K'S MICHIFUKU  
SUMO CATTLE CO HANA C152  
MACQUARIE WAGYU Y408  
MACQUARIE WAGYU F Z736

DAM **TF 1013**

WORLD K'S MICHIFUKU  
TF 804

MONJIRO J11550  
MICHIKO J655635  
ITOSHIGENAMI  
TF 713

TRIF23U7814L / FB107792

4/23/2023

FREE

FULLBLOOD BLACK HORNED

	GL	BW	200 Day	400 Day	600 Day	MCW	Milk	SC	CW	EMA	RF	RBV	MS	MF	WBI	SRI	FBTI	F1TI
EBV	-1.8	-0.6	+2	+6	+5	+5	-4	-1.4	+20	+4.8	+2.5	-0.8	+2.6	+0.50	\$226	\$267	\$237	\$239
AVG	-0.1	+1.2	+11	+18	+24	+24	+0	-0.2	+20	+2.7	-0.3	+0.2	+1.2	+0.20	\$171	\$196	\$198	\$215

### SELLS OPEN

**TBR 7814L's** sire is **ARUBIAL UNITED P0342**, a direct son of **SUMO CATTLE CO MICHIFUKU F126**, paring genetics by **WORLD K'S MICHIFUKU**, **TF ITOHANA 2**, **TF37 KIKUHANA**, and Takeda standout dam **TF DAI 2 KINTOU 3** with **MACQUARIE WAGYU C1624**, herself sired by **MACQUARIE Y408**, sired by **ETJ003 KITATERUYASUDO I J2810** and standout dam **TWA F U561** by **TF YUKIHARUNAMI 4**, **TF ITOHANA 2**, **TF CHIYOTAKE 8**, and **MACQUARIE WAGYU Z736**, herself paring genetics by **ETJ003 KITATERUYASUDO I J2810**, **TF147 ITOSHIGEFUJI**, **TF37 KIKUHANA**, **TF DAI 2 KINTOU 4**, **WORLD K'S MUCHIFUKU**, and **TF HIKOHIME 3/2**.

**TBR 7814L's** dam is **TF 1013**, paring **WORLD K'S MICHIFUKU**, son of **MONJIRO J11550** and **MICHIKO J655635**, to **TF 804**, daughter of **TF148 ITOSHIGENAMI** and **KIMIFUKU 3** daughter **TF 713**. **TF 1013** has a royal **TAKEDA FARMS** pedigree!

**TBR 7814L** is a record setting female in the World being **TOP 4%** for **MARBLING** and **TOP 1%** for **MARBLE FINENESS**. In addition, **TBR 7814L** is **TOP 8%** in **SRI** at **\$267**. Truly a great donor cow opportunity!

P0342





LOT 6



## TBR YASU 2 7590K

SIRE **TBR KIKUTNAMI 4051A**

KIKUTSURUDOI TF146

IWG MS ITOSHIGENAMI 035X

DAM **TBR YASU 2-7-1 4114B**

WORLD K'S SHIGESHIGETANI 1593

TBR YASU 2-7 2158Y

TANIFUKU DOI J1606  
YASUTSURU J509605  
ITOSHIGENAMI  
CF 504WORLD K'S HARUKI 2  
WORLD K'S SUZUTANI  
TBR ITOSHIGEFUKU 2 9061W  
TBR YASU 2 9038W

TRIF22T7590K / FB107754

7/6/2022

CL16 7% IARSC.

FULLBLOOD BLACK HORNED

ULTRASOUND

	GL	BW	200 Day	400 Day	600 Day	MCW	Milk	SC	CW	EMA	RF	RBV	MS	MF	WBI	SRI	FBI	FIT	IMF	RIBEYE AREA
EBV	+0.2	+0.4	+9	+16	+22	+13	-1	-0.2	+27	+7.6	-0.2	+1.5	+1.0	+0.13	\$199	\$203	\$163	\$150	10.49	8.4
AVG	-0.1	+1.2	+11	+18	+24	+24	+0	-0.2	+20	+2.7	-0.3	+0.2	+1.2	+0.20	\$171	\$196	\$198	\$215		

**PE to TBR KIKUTNAMI 4051A, TBR ITOSHIGEFUKU 9059W & TBR KIKUTSURUTANI 7271H**

TBR 7590K's sire is TBR KIKUTNAMI 4051A, paring TF146 KIKUTSURI DOI, a product of linebred YASUMI DOI and KIKUTSURI J97852, the "Hyogo cow," through TANIFUKU DOI and YASUTSURI, to the famous IWG MS ITOSHIGENAMI 035X, a linebred daughter of TF148 ITOSHIGENAMI (NAKADOI LINE) and CF504, herself sired by TF148 ITOSHIGENAMI over TF HIKOKURA 1/10. TBR 4051A is a maternal brother to TBR HIKOKURA 035 3025Z, the \$400,000 record selling Top 1% donor in the TBR program.

TBR 7590K's dam is TBR YASU 2-7-1 4114B, paring WORLD K'S SHIGESHIGETANI 1593, son of WORLD K'S HARUKI 2 and WORLD K'S SUZUTANI, to TBR YASU 2-7 2158Y, daughter of TBR ITOSHIGEFUKU 2 9061W and TBR YASU 2 9038W.

TBR 7590K has a CUP LAB Ultrasound of 10.49 IMF (grading above USDA Prime) and 8.4 REA already as a young female!



## TBR HIKOFUKU 3 7694K

SIRE **TBR KIKUTNAMI 4051A**

KIKUTSURUDOI TF146

IWG MS ITOSHIGENAMI 035X

DAM **TBR HIKOFUKU 3 9063W**

ITOSHIGEFUJI

TF 713

TANIFUKU DOI J1606  
YASUTSURI J509605  
ITOSHIGENAMI  
CF 504ITOFUJI J483  
DAI 30 NOBORU J920752  
KIMIFUKU 3  
HIKOKURA 1/10

TRIF22T7694K / FB107773

8/9/2022

CL1650%, IARSC

FULLBLOOD BLACK HORNED

ULTRASOUND

	GL	BW	200 Day	400 Day	600 Day	MCW	Milk	SC	CW	EMA	RF	RBV	MS	MF	WBI	SRI	FBI	FIT	IMF	RIBEYE AREA
EBV	+1.2	+1.5	+10	+21	+31	+34	+3	-0.4	+31	-1.8	+0.8	-0.4	+1.1	+0.18	\$142	\$129	\$105	\$88	4.55	9.6
AVG	-0.1	+1.2	+11	+18	+24	+24	+0	-0.2	+20	+2.7	-0.3	+0.2	+1.2	+0.20	\$171	\$196	\$198	\$215		

**PE to TBR KIKUTNAMI 4051A, TBR ITOSHIGEFUKU 9059W & TBR KIKUTSURUTANI 7271H**

TBR 7694K's sire is TBR KIKUTNAMI 4051A, paring TF146 KIKUTSURI DOI, a product of linebred YASUMI DOI and KIKUTSURI J97852, the "Hyogo cow," through TANIFUKU DOI and YASUTSURI, to the famous IWG MS ITOSHIGENAMI 035X, a linebred daughter of TF148 ITOSHIGENAMI (NAKADOI LINE) and CF504, herself sired by TF148 ITOSHIGENAMI over TF HIKOKURA 1/10. TBR 4051A is a maternal brother to TBR HIKOKURA 035 3025Z, the \$400,000 record selling Top 1% donor in the TBR program.

TBR 7694K's dam is TBR HIKOFUKU 3 9063W, paring TF147 ITOSHIGEFUJI, son of ITOFUJI J483 and DAI 30 NOBORU J920752 to TF 713, famous daughter of KIMIFUKU 3 and HIKOKURA 1/10.

TBR 7694K has a CUP LAB Ultrasound of 4.55 IMF and 9.6 REA, nice for a young female!

4051A



# FEMALE OFFERING

LOT 8



LOT 9



## TBR HIKOFUKU 3 7697K

SIRE **TBR KIKUTNAMI 4051A**

KIKUTSURUDOI TF146  
IWG MS ITOSHIGENAMI 035X

TANIFUKU DOI J1606  
YASUTSURU J509605  
ITOSHIGENAMI  
CF 504

DAM **TBR HIKOFUKU 3-4-1 4075B**

WORLD K'S KITAGUNI JR  
TBR HIKOFUKU 3-4 2112Y

KITAGUNI 7-8 J1530  
WORLD K'S NAKAYUKI J13943  
WORLD K'S SANJIROU  
TBR HIKOFUKU 3 9063W

	TRIF22T7697K / FB107775					8/2/2022					FREE				FULLBLOOD BLACK HORNED				ULTRASOUND	
	GL	BW	200 Day	400 Day	600 Day	MCW	Milk	SC	CW	EMA	RF	RBY	MS	MF	WBI	SRI	FBTI	F1TI	IMF	RIBEYE AREA
EBV	+0.4	-1.1	-2	+3	+1	-4	-1	-0.8	+14	+0.3	+0.4	-0.5	+1.7	+0.28	\$108	\$125	\$126	\$129	N/A	4.9
AVG	-0.1	+1.2	+11	+18	+24	+24	+0	-0.2	+20	+2.7	-0.3	+0.2	+1.2	+0.20	\$171	\$196	\$198	\$215		

### SELLS OPEN

**TBR 7697K's** sire is **TBR KIKUTNAMI 4051A**, paring **TF146 KIKUTSURU DOI**, a product of linebred **YASUMI DOI** and **KIKUTSURU J97852**, the "Hyogo cow," through **TANIFUKU DOI** and **YASUTSURU**, to the famous **IWG MS ITOSHIGENAMI 035X**, a linebred daughter of **TF148 ITOSHIGENAMI (NAKADOI LINE)** and **CF504**, herself sired by **TF148 ITOSHIGENAMI** over **TF HIKOKURA 1/10**. **TBR 4051A** is a maternal brother to **TBR HIKOKURA 035 3025Z**, the \$400,000 record selling Top 1% donor in the TBR program.

**TBR 7697K's** dam is **TBR HIKOFUKU 3-4-1 4075B**, paring **WORLD K'S KITAGUNI JR**, son of **KITAGUNI 7-8 J1530** and **WORLD K'S NAKAYUKI J13943**, to **TBR HIKOFUKU 3-4 2112Y**, daughter of **WORLD K'S SANJIROU** and **TBR HIKOFUKU 3 9063W**.



## TBR KIKUTNAMI 7729K

SIRE **TBR KIKUTNAMI 4051A**

KIKUTSURUDOI TF146  
IWG MS ITOSHIGENAMI 035X

TANIFUKU DOI J1606  
YASUTSURU J509605  
ITOSHIGENAMI  
CF 504

DAM **TBR HIKOFUKU 1-5 3005Z**

MFC YASUFUKU JR 7-12  
TBR HIKOFUKU 9060W

WORLD K'S YASUFUKU JR  
CHR MS KITATERU 59J  
ITOSHIGEFUJI  
TF 705

TRIF22T7729K / FB107787					10/30/2022				IARSC					FULLBLOOD BLACK HORNED					ULTRASOUND	
	GL	BW	200 Day	400 Day	600 Day	MCW	Milk	SC	CW	EMA	RF	RBY	MS	MF	WBI	SRI	FBTI	F1TI	IMF	RIBEYE AREA
EBV	+0.3	+1.6	+9	+21	+29	+28	-1	-0.4	+38	+0.4	+0.2	-0.1	+1.2	+0.27	\$158	\$153	\$124	\$108	4.4	9.9
AVG	-0.1	+1.2	+11	+18	+24	+24	+0	-0.2	+20	+2.7	-0.3	+0.2	+1.2	+0.20	\$171	\$196	\$198	\$215		

### PE to TBR KIKUTNAMI 4051A, TBR ITOSHIGEFUKU 9059W & TBR KIKUTSURUTANI 7271H

**TBR 7729K's** sire is **TBR KIKUTNAMI 4051A**, paring **TF146 KIKUTSURU DOI**, a product of linebred **YASUMI DOI** and **KIKUTSURU J97852**, the "Hyogo cow," through **TANIFUKU DOI** and **YASUTSURU**, to the famous **IWG MS ITOSHIGENAMI 035X**, a linebred daughter of **TF148 ITOSHIGENAMI (NAKADOI LINE)** and **CF504**, herself sired by **TF148 ITOSHIGENAMI** over **TF HIKOKURA 1/10**. **TBR 4051A** is a maternal brother to **TBR HIKOKURA 035 3025Z**, the \$400,000 record selling Top 1% donor in the TBR program.

**TBR 7729K's** dam is **TBR HIKOFUKU 1-5 3005Z**, paring **MFC YASUFUKU JR 7-12**, son of **WORLD K'S YASUFUKU JR** and **CHR MS KITATERU 59J** to **TBR HIKOFUKU 9060W**, daughter of **TF147 ITOSHIGEFUJI** and **TF 705**, a famous **KIMIFUKU 3** daughter.

**TBR 7729K** has a CUP LAB Ultrasound of 4.40 IMF and 9.9 REA, nice for a young female!







## TBR HIKOFUKU 3-7-4 7748K

SIRE **TBR KIKUTNAMI 4051A**

KIKUTSURUDOITF146  
IWG MS ITOSHIGENAMI 035X

TANIFUKU DOI J1606  
YASUTSURU J509605  
ITOSHIGENAMI  
CF 504

DAM **TBR HIKOFUKU 3-7 2172Y**

WORLD K'S SANJIROU  
TBR HIKOFUKU 3 9063W

WORLD K'S MICHIFUKU  
WORLD K'S SUZUTANI  
ITOSHIGEFUJI  
TF 713

TRIF22T7748K / FB108520					11/5/2022			CL16 21%, IARS50%						FULLBLOOD BLACK HORNED				ULTRASOUND		
	GL	BW	200 Day	400 Day	600 Day	MCW	Milk	SC	CW	EMA	RF	RBY	MS	MF	WBI	SRI	FBI	FTTI	IMF	RIBEYE AREA
EBV	+1.1	+1.3	+8	+16	+18	+8	-1	-1	+25	+2.4	0	+0.5	+1.3	+0.19	\$162	\$167	\$129	\$119	5.42	9.8
AVG	-0.1	+1.2	+11	+18	+24	+24	+0	-0.2	+20	+2.7	-0.3	+0.2	+1.2	+0.20	\$171	\$196	\$198	\$215		

### SELLS OPEN

**TBR 7748K's** sire is **TBR KIKUTNAMI 4051A**, paring **TF146 KIKUTSURU DOI**, a product of linebred **YASUMI DOI** and **KIKUTSURU J97852**, the "Hyogo cow," through **TANIFUKU DOI** and **YASUTSURU**, to the famous **IWG MS ITOSHIGENAMI 035X**, a linebred daughter of **TF148 ITOSHIGENAMI (NAKADOI LINE)** and **CF504**, herself sired by **TF148 ITOSHIGENAMI** over **TF HIKOKURA 1/10**. **TBR 4051A** is a maternal brother to **TBR HIKOKURA 035 3025Z**, the \$400,000 record selling Top 1% donor in the TBR program.

**TBR 7748K's** dam is **TBR HIKOFUKU 3-7 2172Y**, paring **WORLD K'S SANJIROU**, son of **WORLD K'S MICHIFUKU** and **WORLD K'S SUZUTANI**, to **TBR HIKOFUKU 3 9063W**, daughter of **TF147 ITOSHIGEFUJI** and **ITOSHIGENAMI** the famous **TF 713**.

**TBR 7748K** has a CUP LAB Ultrasound of 5.42 IMF and 9.8 REA, nice for a young female!



## TBR ITOKANEMI 6-5 7749L

SIRE **TBR KIKUTNAMI 4051A**

KIKUTSURUDOITF146  
IWG MS ITOSHIGENAMI 035X

TANIFUKU DOI J1606  
YASUTSURU J509605  
ITOSHIGENAMI  
CF 504

DAM **TBR ITOKANEMI 6 2015Y**

YCB 9333  
ITOKANEMI 5

ITOSHIGENAMI  
HIKOKURA 1/12  
KIKUTERUSHIGE  
ITOKANEMI 4/1

	TRIF23U7749L / FB108521					4/15/2023			F11C					FULLBLOOD BLACK HORNED				ULTRASOUND		
	GL	BW	200 Day	400 Day	600 Day	MCW	Milk	SC	CW	EMA	RF	RBY	MS	MF	WBI	SRI	FBI	F1TI	IMF	RIBEYE AREA
EBV	+0.5	+1.4	+10	+22	+34	+22	+3	0.1	+37	-0.8	-1	-0.2	+1.4	+0.23	\$159	\$150	\$143	\$126	5.11	7.8
AVG	-0.1	+1.2	+11	+18	+24	+24	+0	-0.2	+20	+2.7	-0.3	+0.2	+1.2	+0.20	\$171	\$196	\$198	\$215		

### SELLS OPEN

**TBR 7749L's** sire is **TBR KIKUTNAMI 4051A**, paring **TF146 KIKUTSURU DOI**, a product of linebred **YASUMI DOI** and **KIKUTSURU J97852**, the "Hyogo cow," through **TANIFUKU DOI** and **YASUTSURU**, to the famous **IWG MS ITOSHIGENAMI 035X**, a linebred daughter of **TF148 ITOSHIGENAMI (NAKADOI LINE)** and **CF504**, herself sired by **TF148 ITOSHIGENAMI** over **TF HIKOKURA 1/10**. **TBR 4051A** is a maternal brother to **TBR HIKOKURA 035 3025Z**, the \$400,000 record selling Top 1% donor in the TBR program.

**TBR 7749L's** dam is **TBR ITOKANEMI 6 2015Y**, paring **YCB 9333**, son of **TF147 ITOSHIGENAMI** and **HIKOKURA 1/12**, to **ITOKANEMI 5**, daughter of **TF150 KIKUTERUSHIGE** and **ITOKANEMI 4/1**.

**TBR 7749L** has a CUP LAB Ultrasound of 5.11 IMF and 7.8 REA, nice for a young female!

# FEMALE OFFERING

LOT 12



LOT 13



## TBR SUZUKURA 1-6 7771L

SIRE **TBR KIKUTNAMI 4051A**

KIKUTSURUDOITF146

IWG MS ITOSHIGENAMI 035X

TANIFUKU DOI J1606  
YASUTSURI J509605  
ITOSHIGENAMI  
CF 504

DAM **TBR SUZUKURA 2036Y**

MITSUHIKOKURA

SUZUTAKA 2

ITOMITSU J311  
HIKOKURA 3/9 J790184  
WORLD K'S TAKAZAKURA  
WORLD K'S SUZUTANI

TRIF23U7771L / FB108522					5/14/2023			IARSC						FULLBLOOD BLACK HORNED				ULTRASOUND	
GL	BW	200 Day	400 Day	600 Day	MCW	Milk	SC	CW	EMA	RF	RBV	MS	MF	WBI	SRI	FBTI	FTTI	IMF	RIBEYE AREA
+0.4	-0.1	+1	-1	+7	-6	-1	-0.4	-10	-3.4	+2.1	-1.4	+0.7	+0.03	\$43	\$51	\$49	\$49	3.63	5.8
-0.1	+1.2	+11	+18	+24	+24	+0	-0.2	+20	+2.7	-0.3	+0.2	+1.2	+0.20	\$171	\$196	\$198	\$215		

### SELLS OPEN

**TBR 7771L's** sire is **TBR KIKUTNAMI 4051A**, paring **TF146 KIKUTSURI DOI**, a product of linebred **YASUMI DOI** and **KIKUTSURI J97852**, the "Hyogo cow," through **TANIFUKU DOI** and **YASUTSURI**, to the famous **IWG MS ITOSHIGENAMI 035X**, a linebred daughter of **TF148 ITOSHIGENAMI (NAKADOI LINE)** and **CF504**, herself sired by **TF148 ITOSHIGENAMI** over **TF HIKOKURA 1/10**. **TBR 4051A** is a maternal brother to **TBR HIKOKURA 035 3025Z**, the \$400,000 record selling Top 1% donor in the TBR program.

**TBR 7771L's** dam is **TBR SUZUKURA 2036Y**, paring **TF149 MITSUHIKOKURA**, son of **ITOMITSU J311** and **TF HIKOKURA 3/9 J790184** to **SUZUTAKA 2**, daughter of **WORLD K'S TAKAZAKURA** and the famous **WORLD K'S SUZUTANI**.

**TBR 7771L** has a CUP LAB Ultrasound of 3.63 IMF and 5.8 REA, nice for a young female!



## TBR YASU 2-8-3 7772L

SIRE **TBR KIKUTNAMI 4051A**

KIKUTSURUDOITF146

IWG MS ITOSHIGENAMI 035X

TANIFUKU DOI J1606  
YASUTSURI J509605  
ITOSHIGENAMI  
CF 504

DAM **TBR YASU 2-8-1 4131B**

MFC ITOMORITAKA 0-41

TBR HIKOFUKU 2-2 2163Y

ITOMORITAKA J2703 HONGEN  
CHR MS MICHIFUKU 2095  
WORLD K'S SHIGESHIGETANI 1593  
TBR HIKOFUKU 2 9062W

TRIF23U7772L / FB108523					7/1/2023			IARSC						FULLBLOOD BLACK HORNED				ULTRASOUND	
GL	BW	200 Day	400 Day	600 Day	MCW	Milk	SC	CW	EMA	RF	RBV	MS	MF	WBI	SRI	FBTI	FTTI	IMF	RIBEYE AREA
-0.2	-0.6	+3	+7	+3	0	-2	-1	-7	-1.5	+1.1	-0.7	+0.9	+0.16	\$98	\$110	\$89	\$91	8.55	8.6
-0.1	+1.2	+11	+18	+24	+24	+0	-0.2	+20	+2.7	-0.3	+0.2	+1.2	+0.20	\$171	\$196	\$198	\$215		

### SELLS OPEN

**TBR 7772L's** sire is **TBR KIKUTNAMI 4051A**, paring **TF146 KIKUTSURI DOI**, a product of linebred **YASUMI DOI** and **KIKUTSURI J97852**, the "Hyogo cow," through **TANIFUKU DOI** and **YASUTSURI**, to the famous **IWG MS ITOSHIGENAMI 035X**, a linebred daughter of **TF148 ITOSHIGENAMI (NAKADOI LINE)** and **CF504**, herself sired by **TF148 ITOSHIGENAMI** over **TF HIKOKURA 1/10**. **TBR 4051A** is a maternal brother to **TBR HIKOKURA 035 3025Z**, the \$400,000 record selling Top 1% donor in the TBR program.

**TBR 7772L's** dam is **TBR YASU 2-8-1 4131B**, paring **MFC ITOMORITAKA 0-41**, son of **ITOMORITAKA J2703** and **CHR MS MICHIFUKU 2095**, to **TBR HIKOFUKU 2-2 2163Y**, daughter of **WORLD K'S SHIGESHIGETANI 1593** and **TBR HIKOFUKU 2 9062W**.

**TBR 7772L** has a CUP LAB Ultrasound of 8.55 IMF (grading at USDA Prime) and 8.6 REA already as a young female!





LOT 14



LOT 15

**TBR SHIGEKO 1-13-2 7788L**SIRE **TBR KIKUTNAMI 4051A**

KIKUTSURUDOITF146

IWG MS ITOSHIGENAMI 035X

TANIFUKU DOI J1606  
YASUTSURI J509605  
ITOSHIGENAMI  
CF 504DAM **TBR SHIGEKO 1 13 2190Y**

TBR ITOSHIGEFUKU 2 9061W

TBR SHIGEKO 9036W

ITOSHIGEFUJI  
TF 713  
WORLD K'S SHIGESHIGETANI 1593  
BR MS MICHI-8614 2660

TRIF23U7788L / FB108524

5/21/2023

IARSC

FULLBLOOD BLACK HORNED

ULTRASOUND

	GL	BW	200 Day	400 Day	600 Day	MCW	Milk	SC	CW	EMA	RF	RBV	MS	MF	WBI	SRI	FBI	F1T	IMF	RIBEYE AREA
EBV	-0.5	+01	+6	+12	+16	+21	+2	-0.5	+19	-0.6	+0.6	-0.5	+1.5	+0.23	\$143	\$145	\$128	\$122	4.14	7.5
AVG	-0.1	+1.2	+11	+18	+24	+24	+0	-0.2	+20	+2.7	-0.3	+0.2	+1.2	+0.20	\$171	\$196	\$198	\$215		

**SELLS OPEN**

**TBR 7788L's** sire is **TBR KIKUTNAMI 4051A**, paring **TF146 KIKUTSURI DOI**, a product of linebred **YASUMI DOI** and **KIKUTSURI J97852**, the "Hyogo cow," through **TANIFUKU DOI** and **YASUTSURI**, to the famous **IWG MS ITOSHIGENAMI 035X**, a linebred daughter of **TF148 ITOSHIGENAMI (NAKADOI LINE)** and **CF504**, herself sired by **TF148 ITOSHIGENAMI** over **TF HIKOKURA 1/10**. **TBR 4051A** is a maternal brother to **TBR HIKOKURA 035 3025Z**, the \$400,000 record selling Top 1% donor in the TBR program.

**TBR 7788L's** dam is **TBR SHIGEKO 1 13 2190Y**, paring **TBR ITOSHIGEFUKU 2 9061W**, son of **TF147 ITOSHIGEFUJI** and the famous **TF 713**, to **TBR SHIGEKO 9036W**, daughter of **WORLD K'S SHIGESHIGETANI 1593** and **BR MS MICHI-8614 2660**.

**TBR 7788L** has a CUP LAB Ultrasound of 4.14 IMF and 7.5 REA, nice for a young female!

**TBR YASU 2-9-4 7793L**SIRE **TBR KIKUTSURUTANI 7271H**

TBR KIKUTSURI DOI 4053A

TBR HIKOKURA 035 3025Z

KIKUTSURUDOITF146  
TBR TANITOFUKU 1076X  
WORLD K'S SHIGESHIGETANI 1593  
IWG MS ITOSHIGENAMI 035XDAM **TBR YASU 2-9 2161Y**

HIRASHIGETAYASU J2351 HONGEN

TBR YASU 2 9038W

DAI 20 HIRASHIGE J287  
DAI 5 YURUHIME J187250  
LMR YOJIMBO  
LMR MS SANJIROU 6175

TRIF23U7793L / FB108525

4/30/2023

FREE

FULLBLOOD BLACK HORNED

ULTRASOUND

	GL	BW	200 Day	400 Day	600 Day	MCW	Milk	SC	CW	EMA	RF	RBV	MS	MF	WBI	SRI	FBI	F1T	IMF	RIBEYE AREA
EBV	+1.8	+2.7	+12	+20	+27	+28	-1	+0.3	+31	+3.2	+1.9	+0.2	+0.3	+0.14	\$134	\$124	\$92	\$75	3.21	8
AVG	-0.1	+1.2	+11	+18	+24	+24	+0	-0.2	+20	+2.7	-0.3	+0.2	+1.2	+0.20	\$171	\$196	\$198	\$215		

**SELLS OPEN**

**TBR 7793L's** sire is **TBR KIKUTSURUTANI 7271H**, paring linebred **KIMIFUKU 3** son **TBR KIKUTSURI DOI 4053A**, a son of **TF146 KIKUTSURUDOITF146** and **TBR TANITOFUKU 1076X**, to none other than **TBR HIKOKURA 035 3025Z**, with 1/2 interest selling in January 2022 for \$200,000 USD. **TBR 3025Z** is a direct daughter of **WORLD K'S SHIGESHIGETANI** and **IWG MS ITOSHIGENAMI 035X**, a direct daughter of **TF148 ITOSHIGENAMI** and **CF504**, an own daughter of **TF148 ITOSHIGENAMI** and **TF HIKOKURA 1/10**.

**TBR 7793L's** dam is **TBR YASU 2-9 2161Y**, paring **HIRASHIGETAYASU J2351 (KADAKA LINE)**, son of **DAI 20 HIRASHIGE J287** and **DAI 5 YURUHIME J187250**, to **TBR YASU 2 9038W**, daughter of **LMR YOJIMBO** and **LMR MS SANJIROU 6175**.

**TBR 7793L** has a CUP LAB Ultrasound of 3.39 IMF and 7.7 REA, nice for a young female!

LOT 16



## TBR HIKOFUKU 2-5 7796L

SIRE **TBR KIKUTNAMI 4051A**

KIKUTSURUDOITF146  
IWG MS ITOSHIGENAMI 035X

TANIFUKU DOI J1606  
YASUTSURU J509605  
ITOSHIGENAMI  
CF 504

DAM **TBR HIKOFUKU 2-2 2163Y**

WORLD K'S SHIGESHIGETANI 1593  
TBR HIKOFUKU 2 9062W

WORLD K'S HARUKI 2  
WORLD K'S SUZUTANI  
ITOSHIGEFUJI  
TF 713

	TRIF23U7796L / FB108526					4/20/2023					FREE					FULLBLOOD BLACK HORNED				
	GL	BW	200 Day	400 Day	600 Day	MCW	Milk	SC	CW	EMA	RF	RBV	MS	MF	WBI	SRI	FTI	F1TI		
EBV	+1.2	+2.5	+15	+29	+36	+35	+3	+0.1	+37	+3.8	-1.7	+1.1	+1.8	+0.20	\$225	\$214	\$185	\$163		
AVG	-0.1	+1.2	+11	+18	+24	+24	+0	-0.2	+20	+2.7	-0.3	+0.2	+1.2	+0.20	\$171	\$196	\$198	\$215		

### SELLS OPEN

**TBR 7796L's** sire is **TBR KIKUTNAMI 4051A**, paring **TF146 KIKUTSURU DOI**, a product of linebred **YASUMI DOI** and **KIKUTSURU J97852**, the "Hyogo cow," through **TANIFUKU DOI** and **YASUTSURU**, to the famous **IWG MS ITOSHIGENAMI 035X**, a linebred daughter of **TF148 ITOSHIGENAMI (NAKADOI LINE)** and **CF504**, herself sired by **TF148 ITOSHIGENAMI** over **TF HIKOKURA 1/10**. **TBR 4051A** is a maternal brother to **TBR HIKOKURA 035 3025Z**, the \$400,000 record selling Top 1% donor in the TBR program.

**TBR 7796L's** dam is **TBR HIKOFUKU 2-2 2163Y**, paring **WORLD K'S SHIGESHIGETANI 1593**, son of **WORLD K'S HARUKI 2** and **WORLD K'S SUZUTANI**, to **TBR HIKOFUKU 2 9062W**, daughter of **TF147 ITOSHIGEFUJI** and the famous **TF 713**.



## TBR SHIGEKO 1-8 7798L

SIRE **TBR KIKUTSURUTANI 7271H**

TBR KIKUTSURU DOI 4053A  
TBR HIKOKURA 035 3025Z

KIKUTSURUDOITF146  
TBR TANITOFUKU 1076X  
WORLD K'S SHIGESHIGETANI 1593  
IWG MS ITOSHIGENAMI 035X

DAM **TBR SHIGEKO 1 7 0 4110B**

TBR ITOSHIGEFUKU 2 9061W  
TBR SHIGEKO 1-7 2140Y

ITOSHIGEFUJI  
TF 713  
TBR ITOSHIGEFUKU 2 9061W  
TBR SHIGEKO 9036W

	TRIF23U7798L / FB108527					5/20/2023					FREE					FULLBLOOD BLACK HORNED					ULTRASOUND	
	GL	BW	200 Day	400 Day	600 Day	MCW	Milk	SC	CW	EMA	RF	RBV	MS	MF	WBI	SRI	FTI	F1TI			IMF	RIBEYE AREA
EBV	-0.4	+0.3	+5	+16	-22	+27	+4	-0.1	+27	-0.6	+0.1	-0.4	+1.1	+0.14	\$127	\$121	\$121	\$110			3.39	7.6
AVG	-0.1	+1.2	+11	+18	+24	+24	+0	-0.2	+20	+2.7	-0.3	+0.2	+1.2	+0.20	\$171	\$196	\$198	\$215				

### SELLS OPEN

**TBR 7798L's** sire is **TBR KIKUTSURUTANI 7271H**, paring linebred **KIMIFUKU 3** son **TBR KIKUTSURU DOI 4053A**, a son of **TF146 KIKUTSURUDOITF146** and **TBR TANITOFUKU 1076X**, to none other than **TBR HIKOKURA 035 3025Z**, with ½ interest selling in January 2022 for \$200,000 USD. **TBR 3025Z** is a direct daughter of **WORLD K'S SHIGESHIGETANI** and **IWG MS ITOSHIGENAMI 035X**, a direct daughter of **TF148 ITOSHIGENAMI** and **CF504**, an own daughter of **TF148 ITOSHIGENAMI** and **TF HIKOKURA 1/10**.

**TBR 7798L's** dam is **TBR SHIGEKO 1 7 0 4110B**, paring **TBR ITOSHIGEFUKU 2 9061W**, son of **TF147 ITOSHIGEFUJI** and the famous **TF 713**, to **TBR SHIGEKO 1-7 2140Y**, daughter of **TBR ITOSHIGEFUKU 2 9061W** and **TBR SHIGEKO 9036W**.



LOT 18



## TBR YASU 2-8-4 7801L

SIRE TBR KIKUTNAMI 4051A

KIKUTSURUDOI TF146

IWG MS ITOSHIGENAMI 035X

TANIFUKU DOI J1606  
YASUTSURU J509605  
ITOSHIGENAMI  
CF 504

DAM TBR TOMIKO 4-7 2060Y

HIRASHIGETAYASU J2351 HONGEN

TBR TOMIKO 4 7041T

DAI 20 HIRASHIGE J287  
DAI 5 YURUHIME J187250  
BAR R 12P  
BAR R MISS 24H

	TRIF23U7801L / FB108528					8/1/2023					IARSC					FULLBLOOD BLACK HORNED				
	GL	BW	200 Day	400 Day	600 Day	MCW	Milk	SC	CW	EMA	RF	RBV	MS	MF	WBI	SRI	FBI	FIT		
EBV	+1.3	+3	+18	+36	+44	+48	+2	+0.4	+36	-1.5	-0.7	-0.3	+1.1	+0.25	\$196	\$177	\$150	\$125		
AVG	-0.1	+1.2	+11	+18	+24	+24	+0	-0.2	+20	+2.7	-0.3	+0.2	+1.2	+0.20	\$171	\$196	\$198	\$215		

## SELLS OPEN

TBR 7801L's sire is TBR KIKUTNAMI 4051A, paring TF146 KIKUTSURU DOI, a product of linebred YASUMI DOI and KIKUTSURU J97852, the "Hyogo cow," through TANIFUKU DOI and YASUTSURU, to the famous IWG MS ITOSHIGENAMI 035X, a linebred daughter of TF148 ITOSHIGENAMI (NAKADOI LINE) and CF504, herself sired by TF148 ITOSHIGENAMI over TF HIKOKURA 1/10. TBR 4051A is a maternal brother to TBR HIKOKURA 035 3025Z, the \$400,000 record selling Top 1% donor in the TBR program.

TBR 7801L's dam is TBR TOMIKO 4-7 2060Y, paring HIRASHIGETAYASU J2351 (KADAKA LINE), son of DAI 20 HIRASHIGE J287 and DAI 5 YURUHIME J187250, to TBR TOMIKO 4 7041T, daughter of BAR R 12P and BAR R MISS 24H.



4051A



## TBR YASU 1-6-4 7804L

SIRE TBR KIKUTNAMI 4051A

KIKUTSURUDOI TF146

IWG MS ITOSHIGENAMI 035X

TANIFUKU DOI J1606  
YASUTSURU J509605  
ITOSHIGENAMI  
CF 504

DAM TBR YASU 1-6 2178Y

TBR ITOSHIGEFUKU 2 9061W

TBR YASU 9022W

ITOSHIGEFUKU  
TF 713  
LMR YOJIMBO  
LMR MS SANJIROU 617S

	TRIF23U7804L / FB108530					3/21/2023					CL16 21%					FULLBLOOD BLACK HORNED					ULTRASOUND	
	GL	BW	200 Day	400 Day	600 Day	MCW	Milk	SC	CW	EMA	RF	RBV	MS	MF	WBI	SRI	FBI	FIT			IMF	RIBEYE AREA
EBV	-0.6	+0.1	+13	+23	+28	+23	+4	0	+29	+0.9	-0.6	+0.6	+1.1	+0.18	\$176	\$169	\$144	\$129			5.1	9.2
AVG	-0.1	+1.2	+11	+18	+24	+24	+0	-0.2	+20	+2.7	-0.3	+0.2	+1.2	+0.20	\$171	\$196	\$198	\$215				

## SELLS OPEN

TBR 7804L's sire is TBR KIKUTNAMI 4051A, paring TF146 KIKUTSURU DOI, a product of linebred YASUMI DOI and KIKUTSURU J97852, the "Hyogo cow," through TANIFUKU DOI and YASUTSURU, to the famous IWG MS ITOSHIGENAMI 035X, a linebred daughter of TF148 ITOSHIGENAMI (NAKADOI LINE) and CF504, herself sired by TF148 ITOSHIGENAMI over TF HIKOKURA 1/10. TBR 4051A is a maternal brother to TBR HIKOKURA 035 3025Z, the \$400,000 record selling Top 1% donor in the TBR program.

TBR 7804L's dam is TBR YASU 1-6 2178Y, paring TBR ITOSHIGEFUKU 2 9061W, son of TF147 ITOSHIGEFUKU and the famous KIMI-FUKU 3 daughter TF713, to TBR YASU 9022W, daughter of LMR YOJIMBO and LMR MS SANJIROU 617S.

TBR 7804L has a CUP LAB Ultrasound of 5.10 IMF and 9.2 REA, nice for a young female!



# FEMALE OFFERING

LOT 20



## TBR KR 400 77 2-2 7807L

SIRE TBR ITOSHIGEFUKU 9059W

ITOSHIGEFUJI  
TF 713

ITOFUJI J483  
DAI 30 NOBORU J920752  
KIMIFUKU 3  
HIKOKURA 1/10

DAM TBR KR 400 77 2 6135D

TBR KIKUTNAMI 4051A  
TBR KR 400-77 3004Z

KIKUTSURUDOI TF146  
IWG MS ITOSHIGENAMI 035X  
TBR ITOSHIGEFUKU 9059W  
KR 400-77

TRIF23U7807L / FB108531

4/30/2023

F11C

FULLBLOOD BLACK HORNED

	GL	BW	200 Day	400 Day	600 Day	MCW	Milk	SC	CW	EMA	RF	RBY	MS	MF	WBI	SRI	FBI	F1TI
EBV	+0.4	+2.3	+15	+25	+45	+43	+5	-0.4	+41	+1	+1.3	0	+1	+0.11	\$191	\$174	\$135	\$110
AVG	-0.1	+1.2	+11	+18	+24	+24	+0	-0.2	+20	+2.7	-0.3	+0.2	+1.2	+0.20	\$171	\$196	\$198	\$215

### SELLS OPEN

**TBR 7807L's** sire is **TBR ITOSHIGEFUKU 9059W**, paring **TF147 ITOSHIGEFUJI**, a linebred son of **ITOFUJI** by **DAI 30 NOBORU**, with heavy influences from **ITOZAKURA** and **OKAYAMA** genetics through **HIROTA** and **DAI 10 NOBORU**. The dam of **TBR 9059W**, the famous **TF713**, is a direct daughter of **TANIFUKU DOI** son **KIMIFUKU 3** by **TF HIKOKURA 1/10**, herself paring genetics from **ITOMICHI** and **DAI 3 KIYOHIME** of **KUMANAMI** and **OKAYAMA** heritage with the Zenkyo Grand Champion cow **EZOKINTOU J11691**. **TBR 9059W** is early maturing, upgrades maternal abilities and increases growth without sacrificing marbling.

**TBR 7807L's** dam is **TBR KR 400 77 2 6135D**, paring **TBR KIKUTNAMI 4051A**, son of **TF146 KIKUTSURUDOI** and **IWG MS ITOSHIGENAMI 035X**, to **TBR KR 400-77 3004Z**, daughter of **TBR ITOSHIGEFUKU 9059W** and **KR 400-77**.



## TBR HIKOFUKU 2-4-3 7808L

SIRE TBR ITOSHIGEFUKU 9059W

ITOSHIGEFUJI  
TF 713

ITOFUJI J483  
DAI 30 NOBORU J920752  
KIMIFUKU 3  
HIKOKURA 1/10

DAM TBR HIKOFUKU 2-4 2171Y

WORLD K'S SHIGESHIGETANI 1593  
TBR HIKOFUKU 2 9062W

WORLD K'S HARUKI 2  
WORLD K'S SUZUTANI  
ITOSHIGEFUJI  
TF 713

TRIF23U7808L / FB108532

5/20/2023

CL16.4%

FULLBLOOD BLACK HORNED

ULTRASOUND

	GL	BW	200 Day	400 Day	600 Day	MCW	Milk	SC	CW	EMA	RF	RBY	MS	MF	WBI	SRI	FBI	F1TI	IMF	RIBEYE AREA
EBV	-0.6	+2.2	+16	+23	+42	+41	+2	+0.4	+37	-0.1	+0.9	-0.2	+1.2	+0.12	\$175	\$162	\$135	\$112	5.56	7.1
AVG	-0.1	+1.2	+11	+18	+24	+24	+0	-0.2	+20	+2.7	-0.3	+0.2	+1.2	+0.20	\$171	\$196	\$198	\$215		

### SELLS OPEN

**TBR 7808L's** sire is **TBR ITOSHIGEFUKU 9059W**, paring **TF147 ITOSHIGEFUJI**, a linebred son of **ITOFUJI** by **DAI 30 NOBORU**, with heavy influences from **ITOZAKURA** and **OKAYAMA** genetics through **HIROTA** and **DAI 10 NOBORU**. The dam of **TBR 9059W**, the famous **TF713**, is a direct daughter of **TANIFUKU DOI** son **KIMIFUKU 3** by **TF HIKOKURA 1/10**, herself paring genetics from **ITOMICHI** and **DAI 3 KIYOHIME** of **KUMANAMI** and **OKAYAMA** heritage with the Zenkyo Grand Champion cow **EZOKINTOU J11691**. **TBR 9059W** is early maturing, upgrades maternal abilities and increases growth without sacrificing marbling.

**TBR 7808L's** dam is **TBR HIKOFUKU 2-4 2171Y**, paring **WORLD K'S SHIGESHIGETANI 1593**, son of **WORLD K'S HARUKI 2** and **WORLD K'S SUZUTANI**, to **TBR HIKOFUKU 2 9062W**, daughter of **TF147 ITOSHIGEFUJI** and the famous **TF 713**.

**TBR 7808L** has a CUP LAB Ultrasound of 5.56 IMF and 7.1 REA, nice for a young female!

9059W





LOT 22



LOT 23

**TBR HIKOFUKU 1-1-7 7841L**SIRE **TBR ITOSHIGEFUKU 9059W**ITOSHIGEFUJI  
TF 713DAM **TBR TOMIKO 1-4 2039Y**HIRASHIGETAYASU J2351 HONGEN  
TBR TOMIKO 7037TITOFUJI J483  
DAI 30 NOBORU J920752  
KIMIFUKU 3  
HIKOKURA 1/10DAI 20 HIRASHIGE J287  
DAI 5 YURUHIME J187250  
BAR R 12P  
BAR R MISS 24H

TRIF23U7841L / FB108536				5/2/2023				FREE				FULLBLOOD BLACK HORNED				ULTRASOUND			
GL	BW	200 Day	400 Day	600 Day	MCW	Milk	SC	CW	EMA	RF	RBV	MS	MF	WBI	SRI	FBTI	F1TI	IMF	RIBEYE AREA
+2	+3.2	+15	+22	+37	+39	+7	+0.1	+28	-0.4	+1.7	-0.5	+0.4	+0.11	\$133	\$111	\$93	\$72	4.17	6.8
-0.1	+1.2	+11	+18	+24	+24	+0	-0.2	+20	+2.7	-0.3	+0.2	+1.2	+0.20	\$171	\$196	\$198	\$215		

**SELLS OPEN**

**TBR 7841L's** sire is **TBR ITOSHIGEFUKU 9059W**, paring **TF147 ITOSHIGEFUJI**, a linebred son of **ITOFUJI** by **DAI 30 NOBORU**, with heavy influences from **ITOZAKURA** and **OKAYAMA** genetics through **HIROTA** and **DAI 10 NOBORU**. The dam of **TBR 9059W**, the famous **TF713**, is a direct daughter of **TANIFUKU DOI** son **KIMIFUKU 3** by **TF HIKOKURA 1/10**, herself paring genetics from **ITOMICHI** and **DAI 3 KIYOHIME** of **KUMANAMI** and **OKAYAMA** heritage with the Zenkyo Grand Champion cow **EZOKINTOU J11691**. **TBR 9059W** is early maturing, upgrades maternal abilities and increases growth without sacrificing marbling.

**TBR 7841L's** dam is **TBR TOMIKO 1-4 2039Y**, paring **HIRASHIGETAYASU J2351 (KADAKA LINE)**, son of **DAI 20 HIRASHIGE J287** and **DAI 5 YURUHIME J187250**, to **TBR TOMIKO 7037T**, daughter of **BAR R 12P** and **BAR R MISS 24H**.

**TBR 7841L** has a CUP LAB Ultrasound of 4.17 IMF and 6.8 REA, nice for a young female!

**TBR SHIGEKO 1-13-3 7847L**SIRE **TBR ITOSHIGEFUKU 9059W**ITOSHIGEFUJI  
TF 713DAM **TBR SHIGEKO 1 13 1 6365E**TBR SHIGENAMINAMI 3024Z  
TBR SHIGEKO 1 13 2190YITOFUJI J483  
DAI 30 NOBORU J920752  
KIMIFUKU 3  
HIKOKURA 1/10WORLD K'S SHIGESHIGETANI 1593  
IWG MS ITOSHIGENAMI 035X  
TBR ITOSHIGEFUKU 2 9061W  
TBR SHIGEKO 9036W

TRIF23U7847L / FB108537					6/14/2023				CL16 13%				FULLBLOOD BLACK HORNED				ULTRASOUND		
GL	BW	200 Day	400 Day	600 Day	MCW	Milk	SC	CW	EMA	RF	RBV	MS	MF	WBI	SRI	FBTI	F1TI	IMF	RIBEYE AREA
-0.9	+1.2	+16	+25	+37	+44	0	+0.1	+29	-3.7	+1.9	-1.1	+1	+0.08	\$165	\$155	\$123	\$105	5.15	7.3
-0.1	+1.2	+11	+18	+24	+24	+0	-0.2	+20	+2.7	-0.3	+0.2	+1.2	+0.20	\$171	\$196	\$198	\$215		

**SELLS OPEN**

**TBR 7847L's** sire is **TBR ITOSHIGEFUKU 9059W**, paring **TF147 ITOSHIGEFUJI**, a linebred son of **ITOFUJI** by **DAI 30 NOBORU**, with heavy influences from **ITOZAKURA** and **OKAYAMA** genetics through **HIROTA** and **DAI 10 NOBORU**. The dam of **TBR 9059W**, the famous **TF713**, is a direct daughter of **TANIFUKU DOI** son **KIMIFUKU 3** by **TF HIKOKURA 1/10**, herself paring genetics from **ITOMICHI** and **DAI 3 KIYOHIME** of **KUMANAMI** and **OKAYAMA** heritage with the Zenkyo Grand Champion cow **EZOKINTOU J11691**. **TBR 9059W** is early maturing, upgrades maternal abilities and increases growth without sacrificing marbling.

**TBR 7847L's** dam is **TBR SHIGEKO 1 13 1 6365E**, paring **TBR SHIGENAMINAMI 3024Z** (full brother to **TBR HIKOKURA 035 3025Z!**), son of **WORLD K'S SHIGESHIGETANI** and **IWG MS ITOSHIGENAMI 035X**, a direct daughter of **TF148 ITOSHIGENAMI** and **CF504**, an own daughter of **TF148 ITOSHIGENAMI** and **TF HIKOKURA 1/10**.

**TBR 7847L** has a CUP LAB Ultrasound of 5.15 IMF and 7.3 REA, nice for a young female!

# FEMALE OFFERING

LOT 24



## TBR HIKOFUKU 3-2-5 7850L

SIRE TBR KIKUTSURUTANI 7271H

TBR KIKUTSURU DOI 4053A  
TBR HIKOKURA 035 3025Z

KIKUTSURUDOITF146  
TBR TANITOFUKU 1076X  
WORLD K'S SHIGESHIGETANI 1593  
IWG MS ITOSHIGENAMI 035X

DAM TBR HIKOFUKU 3-2 2111Y

WORLD K'S SANJIROU  
TBR HIKOFUKU 3 9063W

WORLD K'S MICHIFUKU  
WORLD K'S SUZUTANI  
ITOSHIGEFUJI  
TF 713

TRIF23U7850L / FB108538

6/1/2023

CL16 18%

FULLBLOOD BLACK HORNED

	GL	BW	200 Day	400 Day	600 Day	MCW	Milk	SC	CW	EMA	RF	RBV	MS	MF	WBI	SRI	FBI	F1T
EBV	+0.1	+0.7	+7	+10	+16	+6	0	-0.3	+17	+5.7	+1.2	+0.1	+1.5	+0.21	\$170	\$183	\$170	\$163
AVG	-0.1	+1.2	+11	+18	+24	+24	+0	-0.2	+20	+2.7	-0.3	+0.2	+1.2	+0.20	\$171	\$196	\$198	\$215

### SELLS OPEN

TBR 7850L's sire is TBR KIKUTSURUTANI 7271H, paring linebred KIMIFUKU 3 son TBR KIKUTSURU DOI 4053A, a son of TF146 KIKUTSURUDOITF146 and TBR TANITOFUKU 1076X, to none other than TBR HIKOKURA 035 3025Z, with 1/2 interest selling in January 2022 for \$200,000 USD. TBR 3025Z is a direct daughter of WORLD K'S SHIGESHIGETANI and IWG MS ITOSHIGENAMI 035X, a direct daughter of TF148 ITOSHIGENAMI and CF504, an own daughter of TF148 ITOSHIGENAMI and TF HIKOKURA 1/10.

TBR 7850L's dam is TBR HIKOFUKU 3-2 2111Y, paring WORLD K'S SANJIROU, son of WORLD K'S MICHIFUKU and WORLD K'S SUZUTANI, to TBR HIKOFUKU 3 9063W, daughter of TF147 ITOSHIGEFUJI and the famous TF 713.



## TBR YASU 1-9-3 7862L

SIRE TBR KIKUTNAMI 4051A

KIKUTSURUDOITF146  
IWG MS ITOSHIGENAMI 035X

TANIFUKU DOI J1606  
YASUTSURU J509605  
ITOSHIGENAMI  
CF 504

DAM TBR YASU 1-9 2109Y

HIRASHIGETAYASU J2351 HONGEN  
TBR YASU 9022W

DAI 20 HIRASHIGE J287  
DAI 5 YURUHIME J187250  
LMR YOJIMBO  
LMR MS SANJIROU 6175

TRIF23U7862L / FB108539

8/14/2023

FREE

FULLBLOOD BLACK HORNED

	GL	BW	200 Day	400 Day	600 Day	MCW	Milk	SC	CW	EMA	RF	RBV	MS	MF	WBI	SRI	FBI	F1T
EBV	+1.6	+1.2	+15	+29	+29	+28	+2	-0.1	+32	+0.6	-0.7	+1	+1.1	+0.22	\$193	\$184	\$147	\$129
AVG	-0.1	+1.2	+11	+18	+24	+24	+0	-0.2	+20	+2.7	-0.3	+0.2	+1.2	+0.20	\$171	\$196	\$198	\$215

### SELLS OPEN

TBR 7862L's sire is TBR KIKUTNAMI 4051A, paring TF146 KIKUTSURU DOI, a product of linebred YASUMI DOI and KIKUTSURU J97852, the "Hyogo cow," through TANIFUKU DOI and YASUTSURU, to the famous IWG MS ITOSHIGENAMI 035X, a linebred daughter of TF148 ITOSHIGENAMI (NAKADOI LINE) and CF504, herself sired by TF148 ITOSHIGENAMI over TF HIKOKURA 1/10. TBR 4051A is a maternal brother to TBR HIKOKURA 035 3025Z, the \$400,000 record selling Top 1% donor in the TBR program.

TBR 7862L's dam is TBR YASU 1-9 2109Y, paring HIRASHIGETAYASU J2351 (KADAKA LINE), son of DAI 20 HIRASHIGE J287 and DAI 5 YURUHIME J187250, to TBR YASU 9022W, daughter of LMR YOJIMBO and LMR MS SANJIROU 6175.



LOT 26



## TBR SHIGEKO 1-9-3 7864L

SIRE **TBR KIKUTSURUTANI 7271H**

TBR KIKUTSURU DOI 4053A

TBR HIKOKURA 035 3025Z

DAM **TBR SHIGEKO 1-9 2174Y**

TBR ITOSHIGEFUKU 2 9061W

TBR SHIGEKO 9036W

KIKUTSURUDOI TF146  
TBR TANITOFUKU 1076X  
WORLD K'S SHIGESHIGETANI 1593  
IWG MS ITOSHIGENAMI 035XITOSHIGEFUJI  
TF 713  
WORLD K'S SHIGESHIGETANI 1593  
BR MS MICHI-8614 2660

TRIF23U7864L / FB108540

8/1/2023

CL16 18%

FULLBLOOD BLACK HORNED

	GL	BW	200 Day	400 Day	600 Day	MCW	Milk	SC	CW	EMA	RF	RBV	MS	MF	WBI	SRI	FBI	F1I
EBV	-0.2	+1.5	+5	+9	+19	+7	+1	-0.4	+15	+2	0	0	+1.2	+0.10	\$113	\$115	\$113	\$103
AVG	-0.1	+1.2	+11	+18	+24	+24	+0	-0.2	+20	+2.7	-0.3	+0.2	+1.2	+0.20	\$171	\$196	\$198	\$215

### SELLS OPEN

**TBR 7864L's** sire is **TBR KIKUTSURUTANI 7271H**, paring linebred **KIMIFUKU 3** son **TBR KIKUTSURU DOI 4053A**, a son of **TF146 KIKUTSURUDOI** and **TBR TANITOFUKU 1076X**, to none other than **TBR HIKOKURA 035 3025Z**, with ½ interest selling in January 2022 for \$200,000 USD. **TBR 3025Z** is a direct daughter of **WORLD K'S SHIGESHIGETANI** and **IWG MS ITOSHIGENAMI 035X**, a direct daughter of **TF148 ITOSHIGENAMI** and **CF504**, an own daughter of **TF148 ITOSHIGENAMI** and **TF HIKOKURA 1/10**.

**TBR 7864L's** dam is **TBR SHIGEKO 1-9 2174Y**, paring **TBR ITOSHIGEFUKU 2 9061W**, son of **TF147 ITOSHIGEFUJI** and the famous **KIMIFUKU 3** daughter **TF713**, to **TBR SHIGEKO 9036W**, daughter of **WORLD K'S SHIGESHIGETANI** and **BR MS MICHI-8614 2660**.



## TBR UMEKO 0-4 7147H

SIRE **TBR KIKUTSURU DOI 4053A**

KIKUTSURUDOI TF146

TBR TANITOFUKU 1076X

DAM **TBR UMEKO 8020U**

WORLD K'S SANJIROU

BR MS TAKAZAKURA 0652

TANIFUKU DOI J1606  
YASUTSURU J509605  
KIMIFUKU TF 726  
TF 705WORLD K'S MICHIFUKU  
WORLD K'S SUZUTANI  
WORLD K'S TAKAZAKURA  
JVP MS FUKUKANE 05E

TRIFR7147H / FB66026

8/9/2020

F11C

FULLBLOOD BLACK HORNED

ULTRASOUND

	GL	BW	200 Day	400 Day	600 Day	MCW	Milk	SC	CW	EMA	RF	RBV	MS	MF	WBI	SRI	FBI	F1I	IMF	RIBEYE AREA
EBV	-0.8	-1	-3	-1	-3	-12	-5	-2.1	-15	+1.8	-3.1	+0.6	+1.4	+0.14	\$110	\$132	\$102	\$106	12.85	15.6
AVG	-0.1	+1.2	+11	+18	+24	+24	+0	-0.2	+20	+2.7	-0.3	+0.2	+1.2	+0.20	\$171	\$196	\$198	\$215		

### SELLS BRED - A/d to ITOHANA 2 Due 4/16/2024

Mating Predictor

	GL	BW	200 Day	400 Day	600 Day	MCW	Milk	SC	CW	EMA	RF	RBV	MS	MF	WBI	SRI	FBI	F1I
EBV	-1.1	+0.1	0	+3	+6	-7	+2	-0.6	+4	-0.9	-1.5	-0.4	+1.0	+0.08	\$63	\$68	\$80	\$78

**TBR 7147H's** sire is **TBR KIKUTSURU DOI 4053A**, paring **TF146 KIKUTSURU DOI**, a product of linebred **YASUMI DOI** and **KIKUTSURU J97852**, the "Hyogo cow," through **TANIFUKU DOI** and **YASUTSURU** to linebred **KIMIFUKU 3** dam **TBR TANITOFUKU 1076X**, a maternal line product of **CHIYOTAKE 10** and linebred **ITOMICHI** daughter **HIKOKURA 1/12**. **KIMIFUKU 3** is the highest marbling bull Mr. Takeda has owned in his lifetime.

**TBR 7147H's** dam is **TBR UMEKO 8020U**, paring **WORLD K'S SANJIROU**, son of **WORLD K'S MICHIFUKU** and **WORLD K'S SUZUTANI**, to **BR MS TAKAZAKURA 0652**, daughter of **WORLD K'S TAKAZAKURA** and **JVP FUKUTSURU 068** daughter **JVP MS FUKUKANE 05E**.

**TBR 7147H** has an exceptional CUP LAB Ultrasound of 12.85 IMF (grading far above USDA Prime) and 15.6 REA!

# FEMALE OFFERING

LOT 28



LOT 29



## TBR HIKOFUKU 3-7-1-4 7323J

SIRE **TBR KIKUTNAMI 4051A**

KIKUTSURUDOITF146  
IWG MS ITOSHIGENAMI 035X

TANIFUKU DOI J1606  
YASUTSUKU J509605  
ITOSHIGENAMI  
CF 504

DAM **TBR HIKOFUKU 3-7-1 4046A**

TBR MITSUITOFUKU 2 2146Y  
TBR HIKOFUKU 3-7 2172Y

MITSUHIKOKURA  
TBR HIKOFUKU 4 9064W  
WORLD K'S SANJIROU  
TBR HIKOFUKU 3 9063W

TRIFS7323J / FB83128					7/21/2021				IARSC				FULLBLOOD BLACK HORNED				
GL	BW	200 Day	400 Day	600 Day	MCW	Milk	SC	CW	EMA	RF	RBV	MS	MF	WBI	SRI	FBTI	F1TI
0	0	+7	+15	+22	+15	-1	-1	+19	+3.3	-0.6	+1.3	+0.4	+0.04	\$140	\$137	\$85	\$71
-0.1	+1.2	+11	+18	+24	+24	+0	-0.2	+20	+2.7	-0.3	+0.2	+1.2	+0.20	\$171	\$196	\$198	\$215

**SELLS BRED** - A'd to TBR SHIGENAMINAMI 3024Z Due 4/16/2024

Mating Predictor																	
GL	BW	200 Day	400 Day	600 Day	MCW	Milk	SC	CW	EMA	RF	RBV	MS	MF	WBI	SRI	FBI	F1T
+0.1	+0.1	+7	+17	+23	+17	-2	-0.6	+18	+4.8	-0.6	+1.0	+1.6	+0.16	\$203	\$212	\$172	\$159

TBR 7323J's sire is **TBR KIKUTNAMI 4051A**, paring **TF146 KIKUTSUKU DOI**, a product of linebred **YASUMI DOI** and **KIKUTSUKU J97852**, the "Hyogo cow," through **TANIFUKU DOI** and **YASUTSUKU**, to the famous **IWG MS ITOSHIGENAMI 035X**, a linebred daughter of **TF148 ITOSHIGENAMI (NAKADOI LINE)** and **CF504**, herself sired by **TF148 ITOSHIGENAMI** over **TF HIKOKURA 1/10**. **TBR 4051A** is a maternal brother to **TBR HIKOKURA 035 3025Z**, the \$400,000 record selling Top 1% donor in the TBR program.

TBR 7323J's dam is **TBR HIKOFUKU 3-7-1 4046A**, paring **TBR MITSUITOFUKU 2 2146Y**, son of **TF149 MITSUHIKOKURA** and **TBR HIKOFUKU 4 9064W**, to **TBR HIKOFUKU 3-7 2172Y**, daughter of **WORLD K'S SANJIROU** and **TBR HIKOFUKU 3 9063W**.



## TBR YASU 1 7502K

SIRE **TBR KIKUTSUKU DOI 4053A**

KIKUTSURUDOITF146  
TBR TANITOFUKU 1076X

TANIFUKU DOI J1606  
YASUTSUKU J509605  
KIMIFUKU TF 726  
TF 705

DAM **TBR YASU 1-8 2127Y**

TF ITOMICHI 1/2  
TBR YASU 9022W

ITOMICHI J1158  
DAI 2 KINTOU J337756  
LMR YOJIMBO  
LMR MS SANJIROU 6175

TRIF22T7502K / FB93869										3/10/2022				FREE				FULLBLOOD BLACK HORNED				ULTRASOUND	
GL	BW	200 Day	400 Day	600 Day	MCW	Milk	SC	CW	EMA	RF	RBV	MS	MF	WBI	SRI	FBI	FTTI	IMF	RIBEYE AREA				
-0.2	+2.5	+25	+40	+55	+39	+6	+1.2	+51	-2.6	+0.7	+0.4	-0.9	-0.08	\$109	\$74	\$47	\$11	5.14	12.8				
-0.1	+1.2	+11	+18	+24	+24	+0	-0.2	+20	+2.7	-0.3	+0.2	+1.2	+0.20	\$171	\$196	\$198	\$215						

**SELLS BRED** - A'd to TBR SHOGUN 7704K Due 11/18/2024

Mating Predictor																	
GL	BW	200 Day	400 Day	600 Day	MCW	Milk	SC	CW	EMA	RF	RBV	MS	MF	WBI	SRI	FBI	F1T
-1.2	+2.7	+22	+40	+57	+49	+2	+0.6	+55	+1.9	0	+0.5	+1.3	+0.19	\$241	\$227	\$187	\$152

TBR 7502K's sire is **TBR KIKUTSUKU DOI 4053A**, paring **TF146 KIKUTSUKU DOI**, a product of linebred **YASUMI DOI** and **KIKUTSUKU J97852**, the "Hyogo cow," through **TANIFUKU DOI** and **YASUTSUKU** to linebred **KIMIFUKU 3** dam **TBR TANITOFUKU 1076X**, a maternal line product of **CHIYOTAKE 10** and linebred **ITOMICHI** daughter **HIKOKURA 1/12**. **KIMIFUKU 3** is the highest marbling bull Mr. Takeda has owned in his lifetime.

TBR 7502K's dam is **TBR YASU 1-8 2127**, paring **TF36 ITOMICHI 1/2**, son of **ITOMICHI J1158** and **DAI 2 KINTOU J337756**, to **TBR YASU 9022W**, daughter of **LMR YOJIMBO** and **LMR MS SANJIROU 6175**.

TBR 7502K has a CUP LAB Ultrasound of 5.14 IMF and 12.8 REA!



LOT 30



## TBR KIMIKURA 1 7506K

SIRE **TBR ITOSHIGEFUKU 9059W**ITOSHIGEFUJI  
TF 713ITOFUJI J483  
DAI 30 NOBORU J920752  
KIMIFUKU 3  
HIKOKURA 1/10DAM **TBR KIMIKURA 1-1 2164Y**WORLD K'S SANJIROU  
TBR KIMIKURA 9035WWORLD K'S MICHIFUKU  
WORLD K'S SUZUTANI  
MITSUHIKOKURA  
TBR TOMIKO 2 7040T

	TRIF22T7506K / FB93870					6/21/2022					FREE					FULLBLOOD BLACK HORNED					ULTRASOUND	
	GL	BW	200 Day	400 Day	600 Day	MCW	Milk	SC	CW	EMA	RF	RBY	MS	MF	WBI	SRI	FBTI	FITI			IMF	RIBEYE AREA
EBV	-1.5	+1.6	+18	+27	+41	+44	+5	-0.1	+39	+1.3	+1.9	+0.4	0	-0.02	\$157	\$135	\$88	\$63			13.23	10.3
AVG	-0.1	+1.2	+11	+18	+24	+24	+0	-0.2	+20	+2.7	-0.3	+0.2	+1.2	+0.20	\$171	\$196	\$198	\$215				

**SELLS BRED** - AI'd to TBR SHOGUN 7704K Due 11/19/2024

	Mating Predictor																		
	GL	BW	200 Day	400 Day	600 Day	MCW	Milk	SC	CW	EMA	RF	RBY	MS	MF	WBI	SRI	FBTI	FITI	
EBV	-1.8	+2.3	+19	+34	+50	+52	+2	-0.1	+49	+3.8	+0.6	+0.5	+1.7	+0.22	\$265	\$258	\$207	\$151	

**TBR 7506K's** sire is **TBR ITOSHIGEFUKU 9059W**, paring **TF147 ITOSHIGEFUJI**, a linebred son of **ITOFUJI** by **DAI 30 NOBORU**, with heavy influences from **ITOZAKURA** and **OKAYAMA** genetics through **HIROTA** and **DAI 10 NOBORU**. The dam of **TBR 9059W**, the famous **TF713**, is a direct daughter of **TANIFUKU DOI** son **KIMIFUKU 3** by **TF HIKOKURA 1/10**, herself paring genetics from **ITOMICHI** and **DAI 3 KIYOHIME** of **KUMANAMI** and **OKAYAMA** heritage with the Zenkyo Grand Champion cow **EZOKINTOU J11691**. **TBR 9059W** is early maturing, upgrades maternal abilities and increases growth without sacrificing marbling.

**TBR 7506K's** dam is **TBR KIMIKURA 1-1 2164Y**, paring **WORLD K'S SANJIROU**, son of **WORLD K'S MICHIFUKU** and **WORLD K'S SUZUTANI**, to **TBR KIMIKURA 9035W**, daughter of **TF149 MITSUHIKOKURA** and **TBR TOMIKO 2 7040T**. **TBR 9035W** sold for \$20,000 in 2012 at the Steaks Are High Sale in Salado, Texas and is full sister to **TBR MITSUFUKU 2 9029W**, the Reserve Grand Champion Japanese Black Fullblood Bull at the 2012 National Western Stock Show in Denver, Colorado.

**TBR 7506K** has an exceptional CUP LAB Ultrasound of 13.23 IMF (far above USDA Prime) and 10.3 REA!



## INSURE YOUR CATTLE.COM

For full mortality insurance,  
bound immediately  
scan here →



# FEMALE OFFERING

LOT 31



LOT 32



## TBR TF1013 1-3 7539K

SIRE **TBR KIKUTNAMI 4051A**

KIKUTSURUDOI TF146  
IWG MS ITOSHIGENAMI 035X

TANIFUKU DOI J1606  
YASUTSURU J509605  
ITOSHIGENAMI  
CF 504

DAM **TF 1013**

WORLD K'S MICHIFUKU  
TF 804

MONJIRO J11550  
MICHIKO J655635  
ITOSHIGENAMI  
TF 713

	TRIF22T7539K / FB107749										3/22/2022				F11C				FULLBLOOD BLACK HORNED				ULTRASOUND	
	GL	BW	200 Day	400 Day	600 Day	MCW	Milk	SC	CW	EMA	RF	RBV	MS	MF	WBI	SRI	FBTI	F1TI	IMF	RIBEYE AREA				
EBV	-0.7	-0.2	+1	+7	+11	+20	-3	-1.1	+27	+1.2	+0.9	-0.6	+2.0	+0.40	\$168	\$183	\$155	\$152	13.54	15				
AVG	-0.1	+1.2	+11	+18	+24	+24	+0	-0.2	+20	+2.7	-0.3	+0.2	+1.2	+0.20	\$171	\$196	\$198	\$215						

**SELLS BRED** - AI'd to ARUBIAL UNITED P0342 Due 4/15/2024

Mating Predictor																		
	GL	BW	200 Day	400 Day	600 Day	MCW	Milk	SC	CW	EMA	RF	RBV	MS	MF	WBI	SRI	FBTI	F1TI
EBV	-2.8	+2.4	+17	+33	+48	+58	-5	-0.6	+52	+3.0	+0.8	-0.4	+2.2	+0.44	\$299	\$306	\$245	\$219

TBR 7539K's sire is **TBR KIKUTNAMI 4051A**, paring **TF146 KIKUTSURU DOI**, a product of linebred **YASUMI DOI** and **KIKUTSURU J97852**, the "Hyogo cow," through **TANIFUKU DOI** and **YASUTSURU**, to the famous **IWG MS ITOSHIGENAMI 035X**, a linebred daughter of **TF148 ITOSHIGENAMI (NAKADOI LINE)** and **CF504**, herself sired by **TF148 ITOSHIGENAMI** over **TF HIKOKURA 1/10**. **TBR 4051A** is a maternal brother to **TBR HIKOKURA 035 3025Z**, the \$400,000 record selling Top 1% donor in the TBR program.

TBR 7539K's dam is **TF 1013**, paring **WORLD K'S MICHIFUKU**, son of **MONJIRO J11550** and **MICHIKO J655635**, to **TF 804**, daughter of **TF148 ITOSHIGENAMI** and **KIMIFUKU 3** daughter **TF 713**. **TF 1013** has a royal **TAKEDA FARMS** pedigree!

TBR 7539K has an exceptional CUP LAB Ultrasound of 13.54 IMF (far above USDA Prime) and 15 REA! **7539K** had the highest IMF of all the animals scanned included in this sale!



## TBR SHIGEKO 1 7561K

SIRE **TBR KIKUTNAMI 4051A**

KIKUTSURUDOI TF146  
IWG MS ITOSHIGENAMI 035X

TANIFUKU DOI J1606  
YASUTSURU J509605  
ITOSHIGENAMI  
CF 504

DAM **TBR SHIGEKO 1-10 2118Y**

TF ITOMICHI 1/2  
TBR SHIGEKO 9036W

ITOMICHI J1158  
DAI 2 KINTOU J337756  
WORLD K'S SHIGESHIGETANI 1593  
BR MS MICH-8614 2660

	TRIF22T7561K / FB93874										7/5/2022				IARSC				FULLBLOOD BLACK HORNED				ULTRASOUND	
	GL	BW	200 Day	400 Day	600 Day	MCW	Milk	SC	CW	EMA	RF	RBV	MS	MF	WBI	SRI	FBTI	F1TI	IMF	RIBEYE AREA				
EBV	+0.9	+0.7	+10	+20	+28	+25	+1	+0.7	+23	-1.6	+2.8	-0.8	+0.1	+0.05	\$97	\$86	\$74	\$59	10.31	11.1				
AVG	-0.1	+1.2	+11	+18	+24	+24	+0	-0.2	+20	+2.7	-0.3	+0.2	+1.2	+0.20	\$171	\$196	\$198	\$215						

**SELLS BRED** - AI'd to ARUBIAL BOND Q007 Due 4/15/2024

Mating Predictor																		
	GL	BW	200 Day	400 Day	600 Day	MCW	Milk	SC	CW	EMA	RF	RBV	MS	MF	WBI	SRI	FBTI	F1TI
EBV	0	-1.8	+1	0	+3	-2	-2	0	+9	+6.3	+1.5	+0.6	+1.6	+0.26	\$142	\$161	\$149	\$149

TBR 7561K's sire is **TBR KIKUTNAMI 4051A**, paring **TF146 KIKUTSURU DOI**, a product of linebred **YASUMI DOI** and **KIKUTSURU J97852**, the "Hyogo cow," through **TANIFUKU DOI** and **YASUTSURU**, to the famous **IWG MS ITOSHIGENAMI 035X**, a linebred daughter of **TF148 ITOSHIGENAMI (NAKADOI LINE)** and **CF504**, herself sired by **TF148 ITOSHIGENAMI** over **TF HIKOKURA 1/10**. **TBR 4051A** is a maternal brother to **TBR HIKOKURA 035 3025Z**, the \$400,000 record selling Top 1% donor in the TBR program.

TBR 7561K's dam is **TBR SHIGEKO 1-10 2118Y**, paring **TF36 ITOMICHI 1/2**, son of **ITOMICHI J1158** and **DAI 2 KINTOU J337756**, to **TBR SHIGEKO 9036W**, daughter of **WORLD K'S SHIGESHIGETANI** and **BR MS MICH-8614 2660**.

TBR 7561K has an exceptional CUP LAB Ultrasound of 10.31 IMF (above USDA Prime) and 11.1 REA!



LOT 33



LOT 34



## TBR YASU 1 7566K

SIRE **TBR KIKUTSURU DOI 4053A**

KIKUTSURUDOI TF146

TBR TANITOFUKU 1076X

TANIFUKU DOI J1606  
YASUTSURU J509605  
KIMIFUKU TF 726  
TF 705DAM **TBR YASU 1-6 2178Y**

TBR ITOSHIGEFUKU 2 9061W

TBR YASU 9022W

ITOSHIGEFUKU  
TF 713  
LMR YOJIMBO  
LMR MS SANJIROU 617S

TRIF22T7566K / FB93875

3/30/2022

FREE

FULLBLOOD BLACK HORNED

ULTRASOUND

	GL	BW	200 Day	400 Day	600 Day	MCW	Milk	SC	CW	EMA	RF	RBY	MS	MF	WBI	SRI	FBI	FITI	IMF	RIBEYE AREA
EBV	-0.3	0	+9	+16	+21	+12	+0	-0.7	+10	-1.7	+0.5	-0.1	+0.5	+0.05	\$110	\$107	\$77	\$66	13.48	13.4
AVG	-0.1	+1.2	+11	+18	+24	+24	+0	-0.2	+20	+2.7	-0.3	+0.2	+1.2	+0.20	\$171	\$196	\$198	\$215		

**SELLS BRED** - AI'd to ITOHANA 2 Due 4/16/2024

Mating Predictor

	GL	BW	200 Day	400 Day	600 Day	MCW	Milk	SC	CW	EMA	RF	RBY	MS	MF	WBI	SRI	FBI	FITI
EBV	-0.8	+0.6	+6	+12	+18	+6	+3	+0.2	+16	-2.7	+0.4	-0.8	+0.6	+0.04	\$66	\$61	\$72	\$64

**TBR 7566K's** sire is **TBR KIKUTSURU DOI 4053A**, paring **TF146 KIKUTSURU DOI**, a product of linebred **YASUMI DOI** and **KIKUTSURU J97852**, the "Hyogo cow," through **TANIFUKU DOI** and **YASUTSURU** to linebred **KIMIFUKU 3** dam **TBR TANITOFUKU 1076X**, a maternal line product of **CHIYOTAKE 10** and linebred **ITOMICHI** daughter **HIKOKURA 1/12**. **KIMIFUKU 3** is the highest marbling bull Mr. Takeda has owned in his lifetime.

**TBR 7566K's** dam is **TBR YASU 1-6 2178Y**, paring **TBR ITOSHIGEFUKU 2 9061W**, son of **TF147 ITOSHIGEFUKU** and the famous **KIMIFUKU 3** daughter **TF713**, to **TBR YASU 9022W**, daughter of **LMR YOJIMBO** and **LMR MS SANJIROU 617S**.

**TBR 7566K** has an exceptional CUP LAB Ultrasound of 13.48 IMF (far above USDA Prime) and 13.4 REA!



## TBR KR 400-77 7574K

SIRE **TBR KIKUTNAMI 4051A**

KIKUTSURUDOI TF146

IWG MS ITOSHIGENAMI 035X

TANIFUKU DOI J1606  
YASUTSURU J509605  
ITOSHIGENAMI  
CF 504DAM **TBR KR 400-77 3004Z**

TBR ITOSHIGEFUKU 9059W

400-77

ITOSHIGEFUKU  
TF 713  
KIKUYASU 400  
HR KOKO 007

TRIF22T7574K / FB93876

3/30/2022

FREE

FULLBLOOD BLACK HORNED

	GL	BW	200 Day	400 Day	600 Day	MCW	Milk	SC	CW	EMA	RF	RBY	MS	MF	WBI	SRI	FBI	FITI
EBV	+0.2	-0.3	+0	+3	+6	+8	+1	-1.9	+2	-0.7	+0.4	-0.3	+0.5	+0.10	\$73	\$77	\$48	\$46
AVG	-0.1	+1.2	+11	+18	+24	+24	+0	-0.2	+20	+2.7	-0.3	+0.2	+1.2	+0.20	\$171	\$196	\$198	\$215

**SELLS BRED** - AI'd to ARUBIAL BOND Q007 Due 4/15/2024

Mating Predictor

	GL	BW	200 Day	400 Day	600 Day	MCW	Milk	SC	CW	EMA	RF	RBY	MS	MF	WBI	SRI	FBI	FITI
EBV	-0.3	-2.2	-4	-9	-8	-10	-2	-1.3	-2	+6.7	+0.3	+0.9	+1.8	+0.28	\$131	\$157	\$137	\$143

**TBR 7574K's** sire is **TBR KIKUTNAMI 4051A**, paring **TF146 KIKUTSURU DOI**, a product of linebred **YASUMI DOI** and **KIKUTSURU J97852**, the "Hyogo cow," through **TANIFUKU DOI** and **YASUTSURU**, to the famous **IWG MS ITOSHIGENAMI 035X**, a linebred daughter of **TF148 ITOSHIGENAMI (NAKADOI LINE)** and **CF504**, herself sired by **TF148 ITOSHIGENAMI** over **TF HIKOKURA 1/10**. **TBR 4051A** is a maternal brother to **TBR HIKOKURA 035 3025Z**, the \$400,000 record selling Top 1% donor in the TBR program.

**TBR 7574K's** dam is **TBR KR 400-77 3004Z**, paring **TBR ITOSHIGEFUKU 9059W**, son of **TF147 ITOSHIGEFUKU** and the famous **KIMIFUKU 3** daughter **TF713**, to **KR 400-77**, daughter of **JVP KIKUYASU 400** and **HR KOKO 007**.

# FEMALE OFFERING

LOT 35



LOT 36



## TBR HIKOFUKU 3 7586K

SIRE **TBR KIKUTSURU DOI 4053A**

DAM **TBR HIKOFUKU 3-8 2173Y**

KIKUTSURUDOI TF146  
TBR TANITOFUKU 1076X

WORLD K'S SANJIROU  
TBR HIKOFUKU 3 9063W

TANIFUKU DOI J1606  
YASUTSURU J509605  
KIMIFUKU TF 726  
TF 705

WORLD K'S MICHIFUKU  
WORLD K'S SUZUTANI  
ITOSHIGEFUJI  
TF 713

	TRIF22T7586K / FB93878				5/10/2022				FREE				FULLBLOOD BLACK HORNED				ULTRASOUND			
	GL	BW	200 Day	400 Day	600 Day	MCW	Milk	SC	CW	EMA	RF	RBV	MS	MF	WBI	SRI	FBI	F1TI	IMF	RIBEYE AREA
EBV	-0.6	+3.7	+16	+27	+36	+36	0	-1.0	+20	+1.7	-0.9	+0.3	+0.5	+0.13	\$171	\$159	\$112	\$89	8.64	14
AVG	-0.1	+1.2	+11	+18	+24	+24	+0	-0.2	+20	+2.7	-0.3	+0.2	+1.2	+0.20	\$171	\$196	\$198	\$215		

**SELLS BRED** - AI'd to TBR SHOGUN 7704K Due 11/17/2024

Mating Predictor																				
	GL	BW	200 Day	400 Day	600 Day	MCW	Milk	SC	CW	EMA	RF	RBV	MS	MF	WBI	SRI	FBI	F1TI		
EBV	-1.4	+3.3	+18	+34	+48	+48	-1	-0.5	+40	+4	-0.8	+0.4	+2	+0.29	\$272	\$270	\$219	\$191		

**TBR 7586K's** sire is **TBR KIKUTSURU DOI 4053A**, paring **TF146 KIKUTSURU DOI**, a product of linebred **YASUMI DOI** and **KIKUTSURU J97852**, the "Hyogo cow," through **TANIFUKU DOI** and **YASUTSURU** to linebred **KIMIFUKU 3** dam **TBR TANITOFUKU 1076X**, a maternal line product of **CHIYOTAKE 10** and linebred **ITOMICHI** daughter **HIKOKURA 1/12**. **KIMIFUKU 3** is the highest marbling bull Mr. Takeda has owned in his lifetime.

**TBR 7586K's** dam is **TBR HIKOFUKU 3-8 2173Y**, paring **WORLD K'S SANJIROU**, son of **WORLD K'S MICHIFUKU** and **WORLD K'S SUZUTANI**, to **TBR HIKOFUKU 3 9063W**, daughter of **TF147 ITOSHIGEFUJI** and the famous **TF 713**.

**TBR 7586K** has a CUP LAB Ultrasound of 8.64 IMF (at USDA Prime) and 14.0 REA!



## TBR TOMIKO 1 7602K

SIRE **TBR ITOSHIGEFUKU 9059W**

DAM **TBR TOMIKO 1-4 2039Y**

ITOSHIGEFUJI  
TF 713

HIRASHIGETAYASU J2351 HONGEN  
TBR TOMIKO 7037T

ITOFUJI J483  
DAI 30 NOBORU J920752  
KIMIFUKU 3  
HIKOKURA 1/10

DAI 20 HIRASHIGE J287  
DAI 5 YURUHIME J187250  
BAR R 12P  
BAR R MISS 24H

	TRIF22T7602K / FB93882				5/1/2022				FREE				FULLBLOOD BLACK HORNED				ULTRASOUND			
	GL	BW	200 Day	400 Day	600 Day	MCW	Milk	SC	CW	EMA	RF	RBY	MS	MF	WBI	SRI	FBI	FTTI	IMF	RIBEYE AREA
EBV	+1.5	+3	+12	+19	+31	+37	+3	-0.2	+30	-2.4	-0.7	-0.2	0	+0.10	\$88	\$68	\$44	\$25	10.76	12.4
AVG	-0.1	+1.2	+11	+18	+24	+24	+0	-0.2	+20	+2.7	-0.3	+0.2	+1.2	+0.20	\$171	\$196	\$198	\$215		

**SELLS BRED** - AI'd to TBR SHIGENAMINAMI 3024Z Due 4/15/2024

Mating Predictor																				
	GL	BW	200 Day	400 Day	600 Day	MCW	Milk	SC	CW	EMA	RF	RBV	MS	MF	WBI	SRI	FBI	F1TI		
EBV	+0.9	+1.9	+10	+20	+29	+30	0	-0.2	+24	+2.0	-0.7	+0.2	+1.4	+0.19	\$174	\$172	\$145	\$128		

**TBR 7602K's** sire is **TBR ITOSHIGEFUKU 9059W**, paring **TF147 ITOSHIGEFUJI**, a linebred son of **ITOFUJI** by **DAI 30 NOBORU**, with heavy influences from **ITOUZAKURA** and **OKAYAMA** genetics through **HIROTA** and **DAI 10 NOBORU**. The dam of **TBR 9059W**, the famous **TF713**, is a direct daughter of **TANIFUKU DOI** son **KIMIFUKU 3** by **TF HIKOKURA 1/10**, herself paring genetics from **ITOMICHI** and **DAI 3 KIYOHIME** of **KUMANAMI** and **OKAYAMA** heritage with the Zenkyo Grand Champion cow **EZOKINTOU J11691**. **TBR 9059W** is early maturing, upgrades maternal abilities and increases growth without sacrificing marbling.

**TBR 7602K's** dam is **TBR TOMIKO 1-4 2039Y**, paring **HIRASHIGETAYASU J2351 (KADAKA LINE)**, son of **DAI 20 HIRASHIGE J287** and **DAI 5 YURUHIME J187250**, to **TBR TOMIKO 7037**, daughter of **BAR R 12P** and **BAR R MISS 24H**.

**TBR 7602K** has an exceptional CUP LAB Ultrasound of 10.76 IMF (above USDA Prime) and 12.4 REA!



LOT 37



## TBR TOMIKO 4 7691K

SIRE TBR KIKUTNAMI 4051A

KIKUTSURUDOITF146

IWG MS ITOSHIGENAMI 035X

TANIFUKU DOI J1606  
YASUTSUKU J509605  
ITOSHIGENAMI  
CF 504

DAM TBR TOMIKO 4-5 4108B

TBR MITSUFUKU 2 9029W

TBR TOMIKO 4 7041T

MITSUHIKOKURA  
TBR TOMIKO 2 7040T  
BAR R 12P  
BAR R MISS 24H

TRIF22T7691K / FB107771										5/6/2022				FREE				FULLBLOOD BLACK HORNED				ULTRASOUND	
GL	BW	200 Day	400 Day	600 Day	MCW	Milk	SC	CW	EMA	RF	RBY	MS	MF	WBI	SRI	FBTI	F1TI	IMF	RIBEYE AREA				
+0.1	+1.6	+12	+24	+31	+32	+6	0	+21	-4.3	+0.9	-0.8	+0.4	+0.04	\$106	\$87	\$76	\$59	11.53	11.8				
-0.1	+1.2	+11	+18	+24	+24	+0	-0.2	+20	+2.7	-0.3	+0.2	+1.2	+0.20	\$171	\$196	\$198	\$215						

**SELLS BRED** - PE January 2024 to sale to TBR MICHITANI 8121L

Mating Predictor																			
GL	BW	200 Day	400 Day	600 Day	MCW	Milk	SC	CW	EMA	RF	RBY	MS	MF	WBI	SRI	FBI	F1T1		
EBV	0	+0.9	+10	+21	+27	+26	+2	-0.1	+19	+1.1	+0.2	0	+1.6	+0.16	\$189	\$189	\$168	\$154	

7691K's sire is **TBR KIKUTNAMI 4051A**, paring **TF146 KIKUTSUKU DOI**, a product of linebred **YASUMI DOI** and **KIKUTSUKU J97852**, the "Hyogo cow," through **TANIFUKU DOI** and **YASUTSUKU**, to the famous **IWG MS ITOSHIGENAMI 035X**, a linebred daughter of **TF148 ITOSHIGENAMI (NAKADOI LINE)** and **CF504**, herself sired by **TF148 ITOSHIGENAMI** over **TF HIKOKURA 1/10**. **TBR 4051A** is a maternal brother to **TBR HIKOKURA 035 3025Z**, the \$400,000 record selling Top 1% donor in the TBR program.

**TBR 7691K's** dam is **TBR TOMIKO 4-5 4108B**, paring **TBR MITSUFUKU 2 9029W** (Grand Champion Japanese Black Fullblood Bull at the 2012 National Western Stock Show in Denver, Colorado), son of **TF149 MITSUHIKOKURA** and **TBR TOMIKO 2 7040T**, to **TBR TOMIKO 4 7041T**, daughter of **BAR R 12P** and **BAR R MISS 24H**.

**TBR 7691K** has an exceptional CUP LAB Ultrasound of 11.53 IMF (above USDA Prime) and 11.8 REA!



## TBR HIKOFUJINAMI 2 7719K

SIRE TBR KIKUTSUKU DOI 4053A

KIKUTSURUDOITF146

TBR TANITOFUKU 1076X

TANIFUKU DOI J1606  
YASUTSUKU J509605  
KIMIFUKU TF 726  
TF 705

DAM TBR HIKOFUJINAMI 2-3 3028Z

TBR MITSUFUKU 2 9029W

TBR HIKOFUJINAMI 2 1004X

MITSUHIKOKURA  
TBR TOMIKO 2 7040T  
ITOSHIGEFUJI  
CF 502

TRIF22T7719K / FB107783					8/4/2022					FREE				FULLBLOOD BLACK HORNED			
GL	BW	200 Day	400 Day	600 Day	MCW	Milk	SC	CW	EMA	RF	RBY	MS	MF	WBI	SRI	FBTI	F1TI
+1.4	-1.4	-6	-6	-9	-15	+1	-1.2	-16	-2.3	+2.4	-1.4	+0.7	+0.02	\$22	\$38	\$49	\$58
-0.1	+1.2	+11	+18	+24	+24	+0	-0.2	+20	+2.7	-0.3	+0.2	+1.2	+0.20	\$171	\$196	\$198	\$215

**SELLS BRED** - PE January 2024 to sale to TBR MICHITANI 8121L

Mating Predictor																			
GL	BW	200 Day	400 Day	600 Day	MCW	Milk	SC	CW	EMA	RF	RBY	MS	MF	WBI	SRI	FBI	F1T1		
EBV	+0.4	+0.6	+6	+14	+20	+23	-3	-0.8	+16	+1.5	-0.4	-0.2	+2	+0.25	\$182	\$194	\$167	\$157	

**TBR 7719K's** sire is **TBR KIKUTSUKU DOI 4053A**, paring **TF146 KIKUTSUKU DOI**, a product of linebred **YASUMI DOI** and **KIKUTSUKU J97852**, the "Hyogo cow," through **TANIFUKU DOI** and **YASUTSUKU** to linebred **KIMIFUKU 3** dam **TBR TANITOFUKU 1076X**, a maternal line product of **CHIYOTAKE 10** and linebred **ITOMICHI** daughter **HIKOKURA 1/12**. **KIMIFUKU 3** is the highest marbling bull Mr. Takeda has owned in his lifetime.

**TBR 7719K's** dam is **TBR HIKOFUJINAMI 2-3 3028Z**, paring **TBR MITSUFUKU 2 9029W** (Grand Champion Japanese Black Fullblood Bull at the 2012 National Western Stock Show in Denver, Colorado), son of **TF149 MITSUHIKOKURA** and **TBR TOMIKO 2 7040T**, to **TBR HIKOFUJINAMI 2 1004X**, daughter of **TF147 ITOSHIGEFUJI** and the famous **CF 502**.

FEMALE OFFERING



TBR KR 400-77 2 7720K

SIRE TBR ITOSHIGEFUKU 9059W

ITOSHIGEFUJI  
TF 713

ITOFUJI J483  
DAI 30 NOBORU J920752  
KIMIFUKU 3  
HIKOKURA 1/10

DAM TBR KR 400-77-2 3003Z

TBR ITOSHIGEFUKU 9059W  
KR 400-77

ITOSHIGEFUJI  
TF 713  
KIKUYASU 400  
HR KOKO 007

	TRIF22T7720K / FB107784										7/21/2022				FREE				FULLBLOOD BLACK HORNED				ULTRASOUND	
	GL	BW	200 Day	400 Day	600 Day	MCW	Milk	SC	CW	EMA	RF	RBV	MS	MF	WBI	SRI	FBTI	FITI	WBI	SRI	FBTI	FITI	IMF	RIBEYE AREA
EBV	+1.0	+2.5	+10	+14	+22	+31	+4	-0.6	+24	-2	+2.6	-0.6	-0.3	-0.02	\$55	\$40	\$15	\$0					8.5	11.3
AVG	-0.1	+1.2	+11	+18	+24	+24	+0	-0.2	+20	+2.7	-0.3	+0.2	+1.2	+0.20	\$171	\$196	\$198	\$215						

**SELLS BRED** - PE January 2024 to sale to TBR MICHITANI 8121L

Mating Predictor																		
	GL	BW	200 Day	400 Day	600 Day	MCW	Milk	SC	CW	EMA	RF	RBV	MS	MF	WBI	SRI	FBTI	FITI
EBV	+0.2	+2.5	+14	+24	+36	+46	-2	-0.4	+36	+1.6	-0.3	+0.2	+1.5	+0.23	\$198	\$195	\$150	\$128

TBR 7720K's sire is TBR ITOSHIGEFUKU 9059W, paring TF147 ITOSHIGEFUJI, a linebred son of ITOFUJI by DAI 30 NOBORU, with heavy influences from ITOZAKURA and OKAYAMA genetics through HIROTA AND DAI 10 NOBORU. The dam of TBR 9059W, the famous TF713, is a direct daughter of TANIFUKU DOI son KIMIFUKU 3 by TF HIKOKURA 1/10, herself paring genetics from ITOMICHI and DAI 3 KIYOHIME of KUMANAMI and OKAYAMA heritage with the Zenkyo Grand Champion cow EZOKINTOU J11691. TBR 9059W is early maturing, upgrades maternal abilities and increases growth without sacrificing marbling.

TBR 7720K's dam is TBR KR 400-77-2 3003, paring TBR ITOSHIGEFUKU 9059W, son of TF147 ITOSHIGEFUJI and the famous TF 713, to KR 400-77, daughter of JVP KIKUYASU 400 and HR KOKO 007.

TBR 7720K has an exceptional CUP LAB Ultrasound of 8.5 IMF (at USDA Prime) and 11.3 REA!



## TBR HIKOKURA 035 3025Z PROGENY

DIRECT PROGENY OF THE \$400,000 VALUED DONOR  
& maternal sibling to the \$400,000 2023 top selling female  
& the \$325,000 1/2 interest top selling bull  
*Lots 40 & 41*

LOT 40



## TBR MICHITANI 8121L

SIRE **SUMO MICHIFUKU F154**

WORLD K'S MICHIFUKU  
SUMO CATTLE CO TANI C016

MONJIRO J11550  
MICHIKO J655635  
TF TERUTANI 40/1  
TF HIKOHIME 34/3

DAM **TBR HIKOKURA 035 3025Z**

WORLD K'S SHIGESHIGETANI 1593  
IWG MS ITOSHIGENAMI 035X

WORLD K'S HARUKI 2  
WORLD K'S SUZUTANI  
ITOSHIGENAMI  
CF 504

	TRIF23U8121L / FB107804					1/24/2023					FREE				FULLBLOOD BLACK HORNED				ULTRASOUND	
	GL	BW	200 Day	400 Day	600 Day	MCW	Milk	SC	CW	EMA	RF	RBV	MS	MF	WBI	SRI	FTI	F1TI	IMF	RIBEYE AREA
EBV	-0.7	+2.6	+17	+34	+49	+60	-7	-0.3	+47	+5.2	-3.2	+1.0	+3.2	+0.48	\$341	\$349	\$284	\$256	3.07	9.5
AVG	-0.1	+1.2	+11	+18	+24	+24	+0	-0.2	+20	+2.7	-0.3	+0.2	+1.2	+0.20	\$171	\$196	\$198	\$215		

### Retaining 50% Semen Interest

**TBR MICHITANI 8121L's** sire is **SUMO CATTLE CO MICHIFUKU F154**, a direct son of **WORLD K'S MICHIFUKU**, paring genetics by **MONJIRO J11550** and dam **MICHIKO J655635** with **SUMO CATTLE CO TANI C016**, herself paring genetics by **TF TERUTANI 40/1** and **TF HIKOHIME 34/3**.

**TBR 8121L's** dam is none other than **TBR HIKOKURA 035 3025Z**, with 1/2 interest selling in January 2022 for \$200,000 USD. **TBR 3025Z** is a direct daughter of **WORLD K'S SHIGESHIGETANI** and **IWG MS ITOSHIGENAMI 035X**, a direct daughter of **TF148 ITOSHIGENAMI** and **CF504**, an own daughter of **TF148 ITOSHIGENAMI** and **TF HIKOKURA 1/10**.

**TBR 8121L** is a record setting bull in the World being TOP 1% for MARBLING, and TOP 2% MARBLE FINENESS. In addition, **TBR 8121L** is TOP 1% in SRI, FTI, WBI and TOP 2% in F1TI. To top it off **TBR 8121L** has a CUP LAB Ultrasound of 3.07 IMF and 9.5, very nice for a young AI prospect carcass bull!

3025Z



F154



# BULL OFFERING



## TBR MICHITANI 8122L

SIRE **SUMO MICHIFUKU F154**

WORLD K'S MICHIFUKU  
SUMO CATTLE CO TANI C016

MONJIRO J11550  
MICHIKO J655635  
TF TERUTANI 40/1  
TF HIKOHIME 34/3

DAM **TBR HIKOKURA 035 3025Z**

WORLD K'S SHIGESHIGETANI 1593  
IWG MS ITOSHIGENAMI 035X

WORLD K'S HARUKI 2  
WORLD K'S SUZUTANI  
ITOSHIGENAMI  
CF 504

	TRIF23U8122L / FB107805					2/27/2023				FREE					FULLBLOOD BLACK HORNED				ULTRASOUND	
	GL	BW	200 Day	400 Day	600 Day	MCW	Milk	SC	CW	EMA	RF	RBY	MS	MF	WBI	SRI	FTI	F1TI	IMF	RIBEYE AREA
EBV	+0.7	+2.5	+14	+27	+35	+37	-6	-0.6	+42	+8.5	-0.4	+0.6	+3.3	+0.54	\$337	\$365	\$313	\$293	2.3	8.8
AVG	-0.1	+1.2	+11	+18	+24	+24	+0	-0.2	+20	+2.7	-0.3	+0.2	+1.2	+0.20	\$171	\$196	\$198	\$215		

### Retaining 50% Semen Interest

TBR MICHITANI 8122L's sire is **SUMO CATTLE CO MICHIFUKU F154**, a direct son of **WORLD K'S MICHIFUKU**, paring genetics by **MONJIRO J11550** and dam **MICHIKO J655635** with **SUMO CATTLE CO TANI C016**, herself paring genetics by **TF TERUTANI 40/1** and **TF HIKOHIME 34/3**.

TBR 8122L's dam is none other than **TBR HIKOKURA 035 3025Z**, with ½ interest selling in January 2022 for \$200,000 USD. **TBR 3025Z** is a direct daughter of **WORLD K'S SHIGESHIGETANI** and **IWG MS ITOSHIGENAMI 035X**, a direct daughter of **TF148 ITOSHIGENAMI** and **CF504**, an own daughter of **TF148 ITOSHIGENAMI** and **TF HIKOKURA 1/10**.

TBR 8122L is a record setting bull in the World being TOP 1% for MARBLING, and TOP 1% MARBLE FINENESS. In addition, **TBR 8122L** is TOP 1% in SRI, FTI, WBI and F1TI. To top it off **TBR 8122L** has a CUP LAB Ultrasound of 2.3 IMF and 8.8, very nice for a young AI prospect carcass bull!



LOT 42



## TBR KIKUTNAMI 7817L

SIRE ARUBIAL BOND Q007

MAYURA ITOSHIGENAMI JNR  
PEPPERMILL GROVE L0021ITOSHIGENAMI  
MAYURA DAI NI KINNTOU 1  
MAYURA ITOSHIGENAMI JNR  
PEPPERMILL GROVE G037

DAM TBR HIKOKURA 035 5 7232J

TBR KIKUTSURI DOI 4053A  
IWG MS ITOSHIGENAMI 035XKIKUTSURI DOI TF146  
TBR TANITOFUKU 1076X  
ITOSHIGENAMI  
CF 504

TRIF23U7817L / FB107795					4/28/2023					FREE				FULLBLOOD BLACK HORNED				ULTRASOUND	
GL	BW	200 Day	400 Day	600 Day	MCW	Milk	SC	CW	EMA	RF	RBY	MS	MF	WBI	SRI	FBTI	F1TI	IMF	RIBEYE AREA
+0.4	-2.0	-3	-6	-7	-14	-3	-0.7	+1	+6.5	-0.1	+0.9	+2.3	+0.37	\$154	\$183	\$172	\$178	2.92	8.3
-0.1	+1.2	+11	+18	+24	+24	+0	-0.2	+20	+2.7	-0.3	+0.2	+1.2	+0.20	\$171	\$196	\$198	\$215		

TBR 7817L's sire is **ARUBIAL BOND**, a direct son of **MAYURA ITOSHIGENAMI JNR**, paring genetics by **TF148 ITOSHIGENAMI** and dam **MAYURA DAI NI KINNTOU 1** with **PEPPERMILL GROVE L0021**, herself paring genetics by **MAYURA ITOSHIGENAMI JNR** and **PEPPERMILL GROVE G037**.

TBR 7817L's dam is **TBR HIKOKURA 035 5 7232J**, a direct daughter of **TBR KIKUTSURI DOI 4053A**, paring **TF146 KIKUTSURI DOI**, a product of linebred **YASUMI DOI** and **KIKUTSURI J97852**, the "Hyogo cow," through **TANIFUKU DOI** and **YASUTSURI** to linebred **KIMIFUKU 3** dam **TBR TANITOFUKU 1076X**, a maternal line product of **CHIYOTAKE 10** and linebred **ITOMICHI** daughter **HIKOKURA 1/12**, AND the great **IWG MS ITOSHIGENAMI 035X**, a linebred daughter of **TF148 ITOSHIGENAMI (NAKADOI LINE)** and **CF504**, herself sired by **TF148 ITOSHIGENAMI** over **TF HIKOKURA 1/10**. Triangle B Ranch and has produced many of our top bulls and donor cows from **035X: 4051A, 3024Z, 3025Z, 7435J**, etc.

TBR 4053A ties four times to **KIKUTSURI J97852** in his pedigree lines. **KIMIFUKU 3** is the highest marbling bull Mr. Takeda has owned in his lifetime.



Q007



## TBR SHIGENAMINAMI 8144L

SIRE TBR SHIGENAMINAMI 3024Z

WORLD K'S SHIGESHIGETANI 1593  
IWG MS ITOSHIGENAMI 035XWORLD K'S HARUKI 2  
WORLD K'S SUZUTANI  
ITOSHIGENAMI  
CF 504

DAM TBR HIKOKURA 151 4306B ET

ITOZURUDOI TF151  
CF 504ITOKITATSURI J1081  
YASUHIME J43313  
ITOSHIGENAMI  
HIKOKURA 1/10

TRIF23U8144L / FB108270					8/26/2023					F11C, IAR5C				FULLBLOOD BLACK HORNED			
GL	BW	200 Day	400 Day	600 Day	MCW	Milk	SC	CW	EMA	RF	RBY	MS	MF	WBI	SRI	FBTI	F1TI
-1.0	-1.4	-2	+3	+0	-7	-1	-0.8	+7	+4.8	-1.3	+0.3	+2.1	+0.29	\$158	\$182	\$182	\$185
-0.1	+1.2	+11	+18	+24	+24	+0	-0.2	+20	+2.7	-0.3	+0.2	+1.2	+0.20	\$171	\$196	\$198	\$215

TBR 8144L's sire is **TBR SHIGENAMINAMI 3024Z**, paring **WORLD K'S SHIGESHIGETANI 1593**, a product of **WORLD K'S HARUKI 2** and **WORLD K'S SUZUTANI**, to the famous **IWG MS ITOSHIGENAMI 035X**, a linebred daughter of **TF148 ITOSHIGENAMI (NAKADOI LINE)** and **CF504**, herself sired by **TF148 ITOSHIGENAMI** over **TF HIKOKURA 1/10**. **TBR 3024Z** is a full brother to **TBR HIKOKURA 035 3025Z**, the \$400,000 record selling Top 1% donor in the TBR program.

TBR 8144L's dam is **TBR HIKOKURA 151 4306B**, paring **TF151 ITOZURUDOI**, son of **ITOKITATSURI J1081** and **YASUHIME J43313**, to the famous **CF 504**, daughter of **TF148 ITOSHIGENAMI** and **HIKOKURA 1/10**.

## TBR HIKOKURA 035 3025Z PROGENY

DIRECT PROGENY OF THE \$400,000 VALUED DONOR  
& maternal sibling to the \$400,000 2023 top selling female  
& the \$325,000 1/2 interest top selling bull

LOT 44



## TBR EMPEROR 8142L

SIRE MAYURA L0010

MAYURA ITOSHIGENAMI JNR  
MAYURA H0159

ITOSHIGENAMI  
MAYURA DAI NI KINNTOU 1  
MAYURA ZULU  
WAGYU GENETICS AIZAKURA D8371

DAM TBR HIKOKURA 035 3025Z

WORLD K'S SHIGESHIGETANI 1593  
IWG MS ITOSHIGENAMI 035X

WORLD K'S HARUKI 2  
WORLD K'S SUZUTANI  
ITOSHIGENAMI  
CF 504

TRIF23U8142L / FB108268					8/10/2023				CHSC				FULLBLOOD BLACK HORNED				ULTRASOUND		
GL	BW	200 Day	400 Day	600 Day	MCW	Milk	SC	CW	EMA	RF	RBV	MS	MF	WBI	SRI	FBTI	F1TI	IMF	RIBEYE AREA
+1.2	-0.6	+3	+7	+10	-12	+2	-0.1	+25	+8.1	-1.4	+1.1	+3.8	+0.42	\$243	\$274	\$285	\$281	1.93	7
-0.1	+1.2	+11	+18	+24	+24	+0	-0.2	+20	+2.7	-0.3	+0.2	+1.2	+0.20	\$171	\$196	\$198	\$215		

**TBR EMPEROR 8142L** is sired by **MAYURA L010**, a direct son of **MAYURA ITOSHIGENAMI JNR**, paring genetics by **TAKEDA** standout sire **TF148 ITOSHIGENAMI** and dam **MAYURA DAI NI KINNTOU 1** with **MAYURA H0159**, herself paring genetics by **MAYURA ZULU** and **WAGYU GENETICS AIZAKURA D8371**.

**TBR 8142L's** dam is none other than **TBR HIKOKURA 035 3025Z**, with 1/2 interest selling in January 2022 for \$200,000 USD. **TBR 3025Z** is a direct daughter of **WORLD K'S SHIGESHIGETANI** and **IWG MS ITOSHIGENAMI 035X**, a direct daughter of **TF148 ITOSHIGENAMI** and **CF504**, an own daughter of **TF148 ITOSHIGENAMI** and **TF HIKOKURA 1/10**.

**TBR 8142L** is a record setting bull in the World being TOP 1% for MARBLING, TOP 4% for MARBLE FINENESS, and TOP 5% for EYE MUSCLE AREA. In addition, **TBR 8142L** is TOP 6% in SRI at \$274, TOP 1% in FBTI and F1TI, and TOP 15% WBI. To top it off **TBR 8142L** is positive for MILK, EMA, and RBV, and has a CUP LAB Ultrasound of 1.93 IMF and 7.0 REA, nice for a very young bull!

3025Z



L0010





LOT 45



## TBR UNITED 151 8143L

SIRE **ARUBIAL UNITED P0342**DAM **LMR MS ITOZURUDOI 8160U**

LOT 46

SUMO CATTLE CO MICHIFUKU F126  
MACQUARIE WAGYU C1624WORLD K'S MICHIFUKU  
SUMO CATTLE CO HANA C152  
MACQUARIE WAGYU Y408  
MACQUARIE WAGYU F 2736ITOZURUDOI TF151  
CF 503ITOKITATSURU J1081  
YASUHIME J433313  
ITOSHIGENAMI  
HIKOKURA 1/10

TRIF23U8143L / FB108269

8/26/2023

CHSC

FULLBLOOD BLACK HORNED

	GL	BW	200 Day	400 Day	600 Day	MCW	Milk	SC	CW	EMA	RF	RBY	MS	MF	WBI	SRI	FBI	F1TI
EBV	-2.4	+0.6	+12	+19	+22	+24	-2	-0.6	+13	+3.1	+3.1	-0.9	+1.9	+0.34	\$230	\$248	\$210	\$202
AVG	-0.1	+1.2	+11	+18	+24	+24	+0	-0.2	+20	+2.7	-0.3	+0.2	+1.2	+0.20	\$171	\$196	\$198	\$215

**TBR 8143L's** sire is **ARUBIAL UNITED P0342**, a direct son of **SUMO CATTLE CO MICHIFUKU F126**, paring genetics by **WORLD K'S MICHIFUKU**, **TF ITOHANA 2**, **TF37 KIKUHANA**, and Take-da standout dam **TF DAI 2 KINTOU 3** with **MACQUARIE WAGYU C1624**, herself sired by **MACQUARIE Y408**, sired by **ETJ003 KITATERUYASUDOI J2810** and standout dam **TWA F U561** by **TF YUKIHARUNAMI 4**, **TF ITOHANA 2**, **TF CHIYOTAKE 8**, and **MACQUARIE WAGYU Z736**, herself paring genetics by **ETJ003 KITATERUYASUDOI J2810**, **TF147 ITOSHIGEFUJI**, **TF37 KIKUHANA**, **TF DAI 2 KINTOU 4**, **WORLD K'S MICHIFUKU**, and **TF HIKOHIME 3/2**.

**TBR 8143L's** dam is **LMR MS ITOZURUDOI 8160U**, paring **TF151 ITOZURUDOI**, son of **ITOKITATSURU J1081** and **YASUHIME J433313**, to the famous **CF 503**, daughter of **TF148 ITOSHIGENAMI** and **HIKOKURA 1/10**.

**TBR 8143L** is TOP 20% for MARBLING and TOP 15% for MARBLE FINENESS. In addition, **TBR 8142L** is TOP 15% in SRI, FBI and F1TI, and TOP 20% WBI.



## TBR KIKUTNAMI 7551K

SIRE **TBR KIKUTNAMI 4051A**DAM **TBR HIKOFUKU 1-2 2126Y**KIKUTSURUDOI TF146  
IWG MS ITOSHIGENAMI 035XTANIFUKU DOI J1606  
YASUTSURU J509605  
ITOSHIGENAMI  
CF 504WORLD K'S SANJIROU  
TBR HIKOFUKU 9060WWORLD K'S MICHIFUKU  
WORLD K'S SUZUTANI  
ITOSHIGEFUJI  
TF 705

TRIF22T7551K / FB107751

2/28/2022

IARSC

FULLBLOOD BLACK HORNED

ULTRASOUND

	GL	BW	200 Day	400 Day	600 Day	MCW	Milk	SC	CW	EMA	RF	RBY	MS	MF	WBI	SRI	FBI	F1TI	IMF	RIBEYE AREA
EBV	+0	-0.5	+1	+3	-2	-5	+2	-1.7	+8	+0.7	-0.9	+0.1	+1.5	+0.25	\$120	\$136	\$119	\$122	5.57	12.8
AVG	-0.1	+1.2	+11	+18	+24	+24	+0	-0.2	+20	+2.7	-0.3	+0.2	+1.2	+0.20	\$171	\$196	\$198	\$215		

**TBR 7551K's** sire is **TBR KIKUTNAMI 4051A**, paring **TF146 KIKUTSURU DOI**, a product of linebred **YASUMI DOI** and **KIKUTSURU J97852**, the "Hyogo cow," through **TANIFUKU DOI** and **YASUTSURU**, to the famous **IWG MS ITOSHIGENAMI 035X**, a linebred daughter of **TF148 ITOSHIGENAMI (NAKADOI LINE)** and **CF504**, herself sired by **TF148 ITOSHIGENAMI** over **TF HIKOKURA 1/10**. **TBR 4051A** is a maternal brother to **TBR HIKOKURA 035 3025Z**, the \$400,000 record selling Top 1% donor in the TBR program.

**TBR 7551K's** dam is **TBR HIKOFUKU 1-2 2126Y**, paring **WORLD K'S SANJIROU**, son of **WORLD K'S MICHIFUKU** and **WORLD K'S SUZUTANI**, to **TBR HIKOFUKU 9060W**, daughter of **TF147 ITOSHIGEFUJI** and the famous **TF 705**.

**TBR 7551K** has a CUP LAB Ultrasound of 5.57 IMF and 12.8 REA, nice for a young bull!

# BULL OFFERING

LOT 47



## TBR KIKUTNAMI 7594K

SIRE **TBR KIKUTNAMI 4051A**

KIKUTSURUDOI TF146  
IWG MS ITOSHIGENAMI 035X

TANIFUKU DOI J1606  
YASUTSURU J509605  
ITOSHIGENAMI  
CF 504

DAM **TBR HIKOFUKU 1-3- 2125Y**

WORLD K'S SANJIROU  
TBR HIKOFUKU 9060W

WORLD K'S MICHIFUKU  
WORLD K'S SUZUTANI  
ITOSHIGEFUJI  
TF 705

TRIF22T7594K / FB107755					4/7/2022				IARSC				FULLBLOOD BLACK HORNED				ULTRASOUND		
GL	BW	200 Day	400 Day	600 Day	MCW	Milk	SC	CW	EMA	RF	RBV	MS	MF	WBI	SRI	FBTI	FITI	IMF	RIBEYE AREA
-1.7	-0.6	+6	+8	+10	-3	-5	-1.8	+8	+2.8	-2.1	+1.0	+1.3	+0.14	\$165	\$182	\$128	\$123	5.35	13
-0.1	+1.2	+11	+18	+24	+24	+0	-0.2	+20	+2.7	-0.3	+0.2	+1.2	+0.20	\$171	\$196	\$198	\$215		

**TBR 7594K's** sire is **TBR KIKUTNAMI 4051A**, paring **TF146 KIKUTSURU DOI**, a product of linebred **YASUMI DOI** and **KIKUTSURU J97852**, the "Hyogo cow," through **TANIFUKU DOI** and **YASUTSURU**, to the famous **IWG MS ITOSHIGENAMI 035X**, a linebred daughter of **TF148 ITOSHIGENAMI (NAKADOI LINE)** and **CF504**, herself sired by **TF148 ITOSHIGENAMI** over **TF HIKOKURA 1/10**. **TBR 4051A** is a maternal brother to **TBR HIKOKURA 035 3025Z**, the \$400,000 record selling Top 1% donor in the TBR program.

**TBR 7594K's** dam is **TBR HIKOFUKU 1-3- 2125Y**, paring **WORLD K'S SANJIROU**, son of **WORLD K'S MICHIFUKU** and **WORLD K'S SUZUTANI**, to **TBR HIKOFUKU 9060W**, daughter of **TF147 ITOSHIGEFUJI** and the famous **TF 705**.

**TBR 7594K** has a CUP LAB Ultrasound of 5.35 IMF and 13.0 REA, nice for a young bull!



## TBR KIKUTNAMI 7606K

SIRE **TBR KIKUTNAMI 4051A**

KIKUTSURUDOI TF146  
IWG MS ITOSHIGENAMI 035X

TANIFUKU DOI J1606  
YASUTSURU J509605  
ITOSHIGENAMI  
CF 504

DAM **TBR YASU 1-8-1 4162B**

TBR YASUKANEKO 1074X  
TBR YASU 1-8 2127Y

FUKUTSURU J068  
TBR UMEKO 8020U  
TF ITOMICHI 1/2  
TBR YASU 9022W

TRIF22T7606K / FB107757					8/1/2022				IARSC					FULLBLOOD BLACK HORNED				ULTRASOUND	
GL	BW	200 Day	400 Day	600 Day	MCW	Milk	SC	CW	EMA	RF	RBV	MS	MF	WBI	SRI	FBTI	F1TI	IMF	RIBEYE AREA
-0.9	+0.6	+13	+29	+41	+32	+2	-0.6	+49	+1.6	-0.6	+0.9	+1.5	+0.27	\$223	\$214	\$170	\$146	2.69	14
-0.1	+1.2	+11	+18	+24	+24	+0	-0.2	+20	+2.7	-0.3	+0.2	+1.2	+0.20	\$171	\$196	\$198	\$215		

**TBR 7606K's** sire is **TBR KIKUTNAMI 4051A**, paring **TF146 KIKUTSURU DOI**, a product of linebred **YASUMI DOI** and **KIKUTSURU J97852**, the "Hyogo cow," through **TANIFUKU DOI** and **YASUTSURU**, to the famous **IWG MS ITOSHIGENAMI 035X**, a linebred daughter of **TF148 ITOSHIGENAMI (NAKADOI LINE)** and **CF504**, herself sired by **TF148 ITOSHIGENAMI** over **TF HIKOKURA 1/10**. **TBR 4051A** is a maternal brother to **TBR HIKOKURA 035 3025Z**, the \$400,000 record selling Top 1% donor in the TBR program.

**TBR 7606K's** dam is **TBR YASU 1-8-1 4162B**, paring **TBR YASUKANEKO 1074X**, son of **JVP FUKUTSURU 068** and **TBR UMEKO 8020U**, to **TBR YASU 1-8 2127Y**, daughter of **TF36 TF ITO-MICHI 1/2** and **TBR YASU 9022W**.

**TBR 7606K** has a CUP LAB Ultrasound of 2.69 IMF and 14.0 REA, good for a young bull!



4051A



LOT 49



## TBR KIKUTNAMI 7698K

SIRE TBR KIKUTNAMI 4051A

KIKUTSURUDOI TF146

IWG MS ITOSHIGENAMI 035X

TANIFUKU DOI J1606  
YASUTSURU J509605  
ITOSHIGENAMI  
CF 504

DAM TBR HIKOFUKU 3-6 2165Y

WORLD K'S SHIGESHIGETANI 1593

TBR HIKOFUKU 3 9063W

WORLD K'S HARUKI 2  
WORLD K'S SUZUTANI  
ITOSHIGEFUJI  
TF 713

TRIF22T7698K / FB107776										3/5/2022				FREE				FULLBLOOD BLACK HORNED				ULTRASOUND	
GL	BW	200 Day	400 Day	600 Day	MCW	Milk	SC	CW	EMA	RF	RBV	MS	MF	WBI	SRI	FBTI	F1TI	IMF	RIBEYE AREA				
+0.1	+1.1	+13	+27	+36	+34	+1	+0.2	+35	-0.1	-1.1	+0.4	+1.0	+0.12	\$176	\$164	\$137	\$117	8.43	13.1				
-0.1	+1.2	+11	+18	+24	+24	+0	-0.2	+20	+2.7	-0.3	+0.2	+1.2	+0.20	\$171	\$196	\$198	\$215						

TBR 7698K's sire is TBR KIKUTNAMI 4051A, paring TF146 KIKUTSURU DOI, a product of linebred YASUMI DOI and KIKUTSURU J97852, the "Hyogo cow," through TANIFUKU DOI and YASUTSURU, to the famous IWG MS ITOSHIGENAMI 035X, a linebred daughter of TF148 ITOSHIGENAMI (NAKADOI LINE) and CF504, herself sired by TF148 ITOSHIGENAMI over TF HIKOKURA 1/10. TBR 4051A is a maternal brother to TBR HIKOKURA 035 3025Z, the \$400,000 record selling Top 1% donor in the TBR program.

TBR 7698K's dam is TBR HIKOFUKU 3-6 2165Y, paring WORLD K'S SHIGESHIGETANI 1593, son of WORLD K'S HARUKI 2 and WORLD K'S SUZUTANI, to TBR HIKOFUKU 3 9063W, daughter of TF147 ITOSHIGEFUJI and the famous TF 713.

TBR 7698K has a CUP LAB Ultrasound of 8.43 IMF (at USDA Prime) and 13.1 REA, exceptional for a young bull!



## TBR KIKUTNAMI 7900L

SIRE TBR KIKUTNAMI 4051A

KIKUTSURUDOI TF146

IWG MS ITOSHIGENAMI 035X

TANIFUKU DOI J1606  
YASUTSURU J509605  
ITOSHIGENAMI  
CF 504

DAM TBR HIKOKURA 035 3025Z

WORLD K'S SHIGESHIGETANI 1593

IWG MS ITOSHIGENAMI 035X

WORLD K'S HARUKI 2  
WORLD K'S SUZUTANI  
ITOSHIGENAMI  
CF 504

TRIF23U7900L / FB107800					4/24/2023				IARSC				FULLBLOOD BLACK HORNED				
GL	BW	200 Day	400 Day	600 Day	MCW	Milk	SC	CW	EMA	RF	RBV	MS	MF	WBI	SRI	FBTI	F1TI
+1.0	-0.5	+5	+10	+12	+5	+1	-0.7	+20	+4.3	+0.4	+0.3	+2.2	+0.29	\$198	\$215	\$195	\$192
-0.1	+1.2	+11	+18	+24	+24	+0	-0.2	+20	+2.7	-0.3	+0.2	+1.2	+0.20	\$171	\$196	\$198	\$215

TBR 7900L's sire is TBR KIKUTNAMI 4051A, paring TF146 KIKUTSURU DOI, a product of linebred YASUMI DOI and KIKUTSURU J97852, the "Hyogo cow," through TANIFUKU DOI and YASUTSURU, to the famous IWG MS ITOSHIGENAMI 035X, a linebred daughter of TF148 ITOSHIGENAMI (NAKADOI LINE) and CF504, herself sired by TF148 ITOSHIGENAMI over TF HIKOKURA 1/10. TBR 4051A is a maternal brother to TBR HIKOKURA 035 3025Z, the \$400,000 record selling Top 1% donor in the TBR program.

TBR 7900L's dam is none other than TBR HIKOKURA 035 3025Z, with 1/2 interest selling in January 2022 for \$200,000 USD. TBR 3025Z is a direct daughter of WORLD K'S SHIGESHIGETANI and IWG MS ITOSHIGENAMI 035X, a direct daughter of TF148 ITOSHIGENAMI and CF504, an own daughter of TF148 ITOSHIGENAMI and TF HIKOKURA 1/10.

TBR 7900L is a line bred SHIGESHIGENAMI J10632 bull with a perfect pedigree!

TBR 7900L is a solid bull being TOP 10% for MARBLING, and TOP 25% MARBLE FINENESS. In addition, TBR 7900L is TOP 25% in SRI at \$215. 7900L is a very nice herd bull prospect!

## FLUSH OF TBR HIKOFUJINAMI 7 6764G

100% TAKEDA GENETICS



6764G



## TBR HIKOFUJINAMI 7 6764G

SIRE ITOSHIGEFUJI

ITOFUJI J483  
DAI 30 NOBORU J920752

DAI 7 ITOZAKURA J65  
HIROTA 1 J803296  
ITOMICHI J1158  
DAI 10 NOBORU 3

DAM CF 502

ITOSHIGENAMI  
HIKOKURA 1/10

SHIGESHIGENAMI J10632  
FUKUYUKI  
ITOMICHI J1158  
HIKOKURA 1/7

TRIFQ6764G / FB62684					5/18/2019				CHS 11%				FULLBLOOD BLACK HORNED				
GL	BW	200 Day	400 Day	600 Day	MCW	Milk	SC	CW	EMA	RF	RBV	MS	MF	WBI	SRI	FBTI	F1TI
+1.6	+4	+22	+32	+48	+57	+3	-0.1	+30	-7.6	+0.0	-1.4	1.6	+0.12	\$166	\$144	\$117	\$91
-0.1	+1.2	+11	+18	+24	+24	+0	-0.2	+20	+2.7	-0.3	+0.2	+1.2	+0.20	\$171	\$196	\$198	\$215

Buyer is purchasing the right to flush **TBR HIKOFUJINAMI 7 6764G** to the bull of Buyer's choice. The flush will be conventional at Triangle B Ranch's ET facility and performed by Cross Country Genetics. Buyer is guaranteed a minimum of (5) transferrable embryos and will receive all embryos produced in the flush. Buyer is responsible for all expenses associated with the flush including labor, drugs, supplies, collection, freezing, mileage, shipping, etc. Buyer is responsible for supplying (4) four units of semen for the flush unless Buyer chooses a bull owned by Triangle B Ranch where semen will be discounted 50% from list price.

**TBR 6764G's** sire is **TF147 ITOSHIGEFUJI**, a linebred son of **ITOFUJI** by **DAI 30 NOBORU**, with heavy influences from **ITOZAKURA** and **OKAYAMA** genetics through **HIROTA** and **DAI 10 NOBORU**. **TF147** is known for early maturing, growth, and milk.

**TBR 6764G's** dam is the famous **CF 502**, a daughter of **TF148 ITOSHIGENAMI (NAKADOI LINE)** and **TF HIKOKURA 1/10**.

*This flush opportunity will only be offered this one time.*



## ARUBIAL UNITED P0342 X TF 1013

SIRE ARUBIAL UNITED P0342

SUMO CATTLE CO MICHIFUKU F126  
MACQUARIE WAGYU C1624

WORLD K'S MICHIFUKU  
SUMO CATTLE CO HANA C152  
MACQUARIE WAGYU Y408  
MACQUARIE WAGYU F 2736

DAM TF 1013

WORLD K'S MICHIFUKU  
TF 804

MONJIRO J11550  
MICHIKO J655635  
ITOSHIGENAMI  
TF 713



P0342

	SIRE: MYMFP0342					DAM: USAFB16582				F11 POTENTIAL				FULLBLOOD BLACK HORNED				
	GL	BW	200 Day	400 Day	600 Day	MCW	Milk	SC	CW	EMA	RF	RBV	MS	MF	WBI	SRI	FBI	F1TI
EBV	-2.3	+2.6	+15	+28	+38	+43	-6	-1.0	+39	+5.1	+0.4	-0.3	+2.2	+0.45	\$292	\$310	\$294	\$229
AVG	-0.1	+1.2	+11	+18	+24	+24	+0	-0.2	+20	+2.7	-0.3	+0.2	+1.2	+0.20	\$171	\$196	\$198	\$215

**DUE: 3/24/2024**

This pregnancy lot is sired by **ARUBIAL UNITED P0342**, a direct son of **SUMO CATTLE CO MICHIFUKU F126**, paring genetics by **WORLD K'S MICHIFUKU**, **TF ITOHANA 2**, **TF37 KIKUHANA**, and Takeda standout dam **TF DAI 2 KINTOU 3** with **MACQUARIE WAGYU C1624**, herself sired by **MACQUARIE Y408**, sired by **ETJ003 KITATERUYASUDOI J2810** and standout dam **TWA F U561** by **TF YUKIHARUNAMI 4**, **TF ITOHANA 2**, **TF CHIYOTAKE 8**, and **MACQUARIE WAGYU Z736**, herself paring genetics by **ETJ003 KITATERUYASUDOI J2810**, **TF147 ITOSHIGEFUJI**, **TF37 KIKUHANA**, **TF DAI 2 KINTOU 4**, **WORLD K'S MICHIFUKU**, and **TF HIKOHIME 3/2**.

The dam of this pregnancy lot is **TAKEDA FARMS TF 1013**, paring **WORLD K'S MICHIFUKU**, son of **MONJIRO J11550** and **MICHIKO J655635**, to **TF 804**, daughter of **TF148 ITOSHIGENAMI** and **KIMIFUKU 3** daughter **TF 713**. **KIMIFUKU 3** is the best marbling bull MR **TAKEDA** owned in his lifetime. **TF 1013** has a truly royal **TAKEDA FARMS** pedigree!





## TBR SHOGUN 7704K X TBR HIKOKURA 713 5 6731F

SIRE TBR SHOGUN 7704K

ARUBIAL UNITED P0342

TBR HIKOKURA 035 3025Z

SUMO CATTLE CO MICHIFUKU F126  
MACQUARIE WAGYU C1624  
WORLD K'S SHIGESHIGETANI 1593  
IWG MS ITOSHIGENAMI 035X

WORLD K'S SHIGESHIGETANI 1593  
IWG MS ITOSHIGENAMI 035X  
KIMIFUKU 3  
HIKOKURA 1/10

DAM TBR HIKOKURA 713 5 6731F

TBR SHIGENAMINAMI 2 3023Z

TF 713

	SIRE: TRIF22T7704K					DAM: TRIFP6731F					FREE				FULLBLOOD BLACK HORNED				
	GL	BW	200 Day	400 Day	600 Day	MCW	Milk	SC	CW	EMA	RF	RBY	MS	MF	WBI	SRI	FBI	F1T	
EBV	-0.1	+1.3	+11	+23	+31	+26	-1	-0.2	+32	+4.3	-1.1	-0.3	+2.7	+0.39	\$256	\$272	\$248	\$233	
AVG	-0.1	+1.2	+11	+18	+24	+24	+0	-0.2	+20	+2.7	-0.3	+0.2	+1.2	+0.20	\$171	\$196	\$198	\$215	

**DUE: 8/02/2024**

This pregnancy lot is sired by the \$325,000 selling bull at the 2023 Spring of Opportunities Sale **TBR SHOGUN 7704K!** **SHOGUN** is sired by **ARUBIAL UNITED P0342**, a direct son of **SUMO CATTLE CO MICHIFUKU F126**, paring genetics by **WORLD K'S MICHIFUKU**, **TF ITOHANA 2**, **TF37 KIKUHANA**, and Takeda standout dam **TF DAI 2 KINTOU 3** with **MACQUARIE WAGYU C1624**, herself sired by **MACQUARIE Y408**, sired by **ETJ003 KITATERUYASUDOJ J2810** and standout dam **TWA F U561** by **TF YUKIHARUNAMI 4**, **TF ITOHANA 2**, **TF CHIYOTAKE 8**, and **MACQUARIE WAGYU Z736**, herself paring genetics by **ETJ003 KITATERUYASUDOJ J2810**, **TF147 ITOSHIGEFUJI**, **TF37 KIKUHANA**, **TF DAI 2 KINTOU 4**, **WORLD K'S MICHIFUKU**, and **TF HIKOHIME 3/2**. **SHOGUN's** dam is none other than **TBR HIKOKURA 035 3025Z**, with ½ interest selling in January 2022 for \$200,000 USD. **TBR 3025Z** is a direct daughter of **WORLD K'S SHIGESHIGETANI** and **IWG MS ITOSHIGENAMI 035X**, a direct daughter of **TF148 ITOSHIGENAMI** and **CF504**, an own daughter of **TF148 ITOSHIGENAMI** and **TF HIKOKURA 1/10**. **SHOGUN** record setting bull in the World being TOP 1% for MARBLING and TOP 8% for MARBLE FINENESS. In addition, **TBR 7704K** is TOP 2% for SRI and TOP 1% in FTI, F1TI, AND WBI. To top it off **TBR 7704K** is positive for GROWTH across the board and TOP 20% for CARCASS WEIGHT!

The dam of this pregnancy has royalty running through her pedigree as well. **TBR HIKOKURA 713 5 6731F** is sired by **TBR SHIGENAMINAMI 2 3023Z**, a full brother to the great **TBR 3025Z**. **TBR 3023Z** is a direct son of **WORLD K'S SHIGESHIGETANI** and **IWG MS ITOSHIGENAMI 035X**, a direct daughter of **TF148 ITOSHIGENAMI** and **CF504**, an own daughter of **TF148 ITOSHIGENAMI** and **TF HIKOKURA 1/10**. **6731F's** dam **TF 713** is a royal **TAKEDA FARMS** bred female sired by **KIMIFUKU 3**, a direct son of **TANIFUKU DOI J1606** and dam **YUKIFUKU**. **TF 713's** dam is **HIKOKURA 1/10**, a direct daughter of **ITOMICHI J1168** and **HIKOKURA 1/7**. **KIMIFUKU 3** is the highest marbling bull **MR SHOGO TAKEDA** owned in his lifetime!



## ARUBIAL BOND Q007 X TF 1013

SIRE ARUBIAL BOND Q007

MAYURA ITOSHIGENAMI JNR  
PEPPERMILL GROVE L0021

ITOSHIGENAMI  
MAYURA DAI NI KINTOU 1  
MAYURA ITOSHIGENAMI JNR  
PEPPERMILL GROVE G037

DAM TF 1013

WORLD K'S MICHIFUKU  
TF 804

MONJIRO J11550  
MICHICO J655635  
ITOSHIGENAMI  
TF 713



	SIRE: MYMFQ007					DAM: USAFB16582					F11 POTENTIAL				FULLBLOOD BLACK HORNED				
	GL	BW	200 Day	400 Day	600 Day	MCW	Milk	SC	CW	EMA	RF	RBY	MS	MF	WBI	SRI	FBI	F1T	
EBV	-0.4	-2.1	-6	-13	-16	-16	-6	-1.3	-2	+9.7	+0.2	+0.8	+2.5	+0.45	\$170	\$213	\$191	\$203	
AVG	-0.1	+1.2	+11	+18	+24	+24	+0	-0.2	+20	+2.7	-0.3	+0.2	+1.2	+0.20	\$171	\$196	\$198	\$215	

**DUE: 3/24/2024**

This pregnancy lot is sired by **ARUBIAL BOND Q007**, a direct son of **MAYURA ITOSHIGENAMI JNR**, paring genetics by sire **TF148 ITOSHIGENAMI** and dam **MAYURA DAI NI KINTOU 1**, and dam **PEPPERMILL GROVE L0021**, herself sired by **MAYURA ITOSHIGENAMI JNR** with standout dam **PEPPERMILL GROVE G037**. **BOND** is a line bred **ITOSHIGENAMI JNR** son who has been proven to be an exceptional sire to add marbling and marbling fineness to his offspring.

The dam of this pregnancy lot is **TAKEDA FARMS TF 1013**, paring **WORLD K'S MICHIFUKU**, son of **MONJIRO J11550** and **MICHICO J655635**, to **TF 804**, daughter of **TF148 ITOSHIGENAMI** and **KIMIFUKU 3** daughter **TF 713**. **KIMIFUKU 3** is the best marbling bull **MR TAKEDA** owned in his lifetime. **TF 1013** has a truly royal **TAKEDA FARMS** pedigree!

# FROZEN GENETICS OFFERING

*Shipping of all frozen genetics is the buyer's responsibility.*

*Embryos are stored at: Triangle B Ranch*

*Sell Per Embryo*



## TBR SHOGUN 7704K X TBR HIKOKURA 713 5 6731F

SIRE TBR SHOGUN 7704K

DAM TBR HIKOKURA 713 5 6731F

ARUBIAL UNITED P0342

TBR HIKOKURA 035 3025Z

TBR SHIGENAMINAMI 2 3023Z

TF 713

SUMO CATTLE CO MICHIFUKU F126  
MACQUARIE WAGYU C1624  
WORLD K'S SHIGESHIGETANI 1593  
IWG MS ITOSHIGENAMI 035X

WORLD K'S SHIGESHIGETANI 1593  
IWG MS ITOSHIGENAMI 035X  
KIMIFUKU 3  
HIKOKURA 1/10

	SIRE: TRIF22T7704K					DAM: TRIFP6731F					FREE				FULLBLOOD BLACK HORNED			
	GL	BW	200 Day	400 Day	600 Day	MCW	Milk	SC	CW	EMA	RF	RBY	MS	MF	WBI	SRI	FBI	F1TI
EBV	-0.1	+1.3	+11	+23	+31	+26	-1	-0.2	+32	+4.3	-1.1	-0.3	+2.7	+0.39	\$256	\$272	\$248	\$233
AVG	-0.1	+1.2	+11	+18	+24	+24	+0	-0.2	+20	+2.7	-0.3	+0.2	+1.2	+0.20	\$171	\$196	\$198	\$215

### 3 EMBRYOS

This embryo lot is sired by the \$325,000 selling bull at the 2023 Spring of Opportunities Sale **TBR SHOGUN 7704K!** **SHOGUN** is sired by **ARUBIAL UNITED P0342**, a direct son of **SUMO CATTLE CO MICHIFUKU F126**, paring genetics by **WORLD K'S MICHIFUKU**, **TF ITOHANA 2**, **TF37 KIKUHANA**, and Takeda standout dam **TF DAI 2 KINTOU 3** with **MACQUARIE WAGYU C1624**, herself sired by **MACQUARIE Y408**, sired by **ETJ003 KITATERUYASUDO J2810** and standout dam **TWA F U561** by **TF YUKIHARUNAMI 4**, **TF ITOHANA 2**, **TF CHIYOTAKE 8**, and **MACQUARIE WAGYU Z736**, herself paring genetics by **ETJ003 KITATERUYASUDO J2810**, **TF147 ITOSHIGEFUJI**, **TF37 KIKUHANA**, **TF DAI 2 KINTOU 4**, **WORLD K'S MICHIFUKU**, and **TF HIKOHIME 3/2**. **SHOGUN's** dam is none other than **TBR HIKOKURA 035 3025Z**, with ½ interest selling in January 2022 for \$200,000 USD. **TBR 3025Z** is a direct daughter of **WORLD K'S SHIGESHIGETANI** and **IWG MS ITOSHIGENAMI 035X**, a direct daughter of **TF148 ITOSHIGENAMI** and **CF504**, an own daughter of **TF148 ITOSHIGENAMI** and **TF HIKOKURA 1/10**. **SHOGUN** record setting bull in the World being TOP 1% for MARBLING and TOP 8% for MARBLE FINENESS. In addition, **TBR 7704K** is TOP 2% for SRI and TOP 1% in FTI, F1TI, AND WBI. To top it off **TBR 7704K** is positive for GROWTH across the board and TOP 20% for CARCASS WEIGHT!

The dam of this embryo lot has royalty running through her pedigree as well. **TBR HIKOKURA 713 5 6731F** is sired by **TBR SHIGENAMINAMI 2 3023Z**, a full brother to the great **TBR 3025Z**. **TBR 3023Z** is a direct son of **WORLD K'S SHIGESHIGETANI** and **IWG MS ITOSHIGENAMI 035X**, a direct daughter of **TF148 ITOSHIGENAMI** and **CF504**, an own daughter of **TF148 ITOSHIGENAMI** and **TF HIKOKURA 1/10**. **6731F's** dam **TF 713** is a royal TAKEDA FARMS bred female sired by **KIMIFUKU 3**, a direct son of **TANIFUKU DOI J1606** and dam **YUKIFUKU**. **TF 713's** dam is **HIKOKURA 1/10**, a direct daughter of **ITOMICHI J1168** and **HIKOKURA 1/7**. **KIMIFUKU 3** is the highest marbling bull MR SHOGO TAKEDA owned in his lifetime!





Shipping of all frozen genetics is the buyer's responsibility.

Semen is stored at: Hawkeye Breeders - Iowa

Sells Per Unit



Lot 56



## TBR SHOGUN 7704K

SIRE **ARUBIAL UNITED P0342**

SUMO CATTLE CO MICHIFUKU F126  
MACQUARIE WAGYU C1624

WORLD K'S MICHIFUKU  
SUMO CATTLE CO HANA C152  
MACQUARIE WAGYU Y408  
MACQUARIE WAGYU F Z736

DAM **TBR HIKOKURA 035 3025Z**

WORLD K'S SHIGESHIGETANI 1593  
IWG MS ITOSHIGENAMI 035X

WORLD K'S HARUKI 2  
WORLD K'S SUZUTANI  
ITOSHIGENAMI  
CF 504

	TRIF22T7704K / FB93855					8/26/2022					FREE					FULLBLOOD BLACK HORNED			
	GL	BW	200 Day	400 Day	600 Day	MCW	Milk	SC	CW	EMA	RF	RBY	MS	MF	WBI	SRI	FTI	F1TI	
EBV	-2.1	+2.9	+19	+40	+59	+59	-2	0	+59	+6.3	-0.6	+0.6	+3.4	+0.45	\$372	\$380	\$326	\$293	
AVG	-0.1	+1.2	+11	+18	+24	+24	+0	-0.2	+20	+2.7	-0.3	+0.2	+1.2	+0.20	\$171	\$196	\$198	\$215	

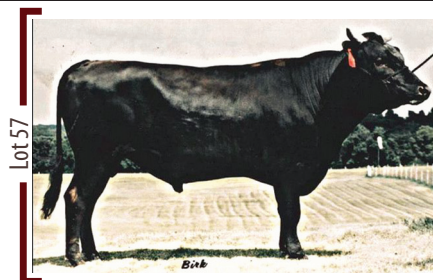
**1 to 5 UNITS - buyer picks amount**

This semen lot is from the \$325,000 selling bull at the 2023 Spring of Opportunities Sale **TBR SHOGUN 7704K!** **SHOGUN** is sired by **ARUBIAL UNITED P0342**, a direct son of **SUMO CATTLE CO MICHIFUKU F126**, paring genetics by **WORLD K'S MICHIFUKU**, **TF ITOHANA 2**, **TF37 KIKUHANA**, and Takeda standout dam **TF DAI 2 KINTOU 3** with **MACQUARIE WAGYU C1624**, herself sired by **MACQUARIE Y408**, sired by **ETJ003 KITATERUYASUDO I J2810** and standout dam **TWA F U561** by **TF YUKIHARUNAMI 4**, **TF ITOHANA 2**, **TF CHIYOTAKE 8**, and **MACQUARIE WAGYU Z736**, herself paring genetics by **ETJ003 KITATERUYASUDO I J2810**, **TF147 ITOSHIGEFUJI**, **TF37 KIKUHANA**, **TF DAI 2 KINTOU 4**, **WORLD K'S MICHIFUKU**, and **TF HIKOHIME 3/2**.

**SHOGUN's** dam is none other than **TBR HIKOKURA 035 3025Z**, with ½ interest selling in January 2022 for \$200,000 USD. **TBR 3025Z** is a direct daughter of **WORLD K'S SHIGESHIGETANI** and **IWG MS ITOSHIGENAMI 035X**, a direct daughter of **TF148 ITOSHIGENAMI** and **CF504**, an own daughter of **TF148 ITOSHIGENAMI** and **TF HIKOKURA 1/10**.

**SHOGUN** record setting bull in the World being TOP 1% for MARBLING and TOP 8% for MARBLE FINENESS. In addition, **TBR 7704K** is TOP 2% for SRI and TOP 1% in FTI, F1TI, AND WBI. To top it off **TBR 7704K** is positive for GROWTH across the board and TOP 20% for CARCASS WEIGHT!

# FROZEN GENETICS OFFERING



## WORLD K'S HARUKI 2

SIRE **MONJIRO J11550**

YASUMIDOI J10328

HARUMI J1086409

TAYASU DOI J7208  
FUKUMUSUME J591035  
TAMORIDOI J7663  
KAZU J446542

DAM **SAKURA 2 J741638**

KENSEI J108

ITOHOME 3 J545978

KENSHIN J902  
YOSHIHARU 22 J968

	WKSFM0139 / FB1614					4/24/1992					FREE					FULLBLOOD BLACK HORNED				
	GL	BW	200 Day	400 Day	600 Day	MCW	Milk	SC	CW	EMA	RF	RBV	MS	MF	WBI	SRI	FBTI	F1TI		
EBV	-3.4	0	+17	+32	+44	+36	+6	+2.5	+43	+2.2	+4.0	-0.4	-0.4	-0.20	\$143	\$121	\$131	\$108		
AVG	-0.1	+1.2	+11	+18	+24	+24	+0	-0.2	+20	+2.7	-0.3	+0.2	+1.2	+0.20	\$171	\$196	\$198	\$215		

### 5 UNITS

**WORLD K'S HARUKI 2** is the paternal half brother to **WORLD K'S MICHIFUKU** (also sired by **MONJIRO**) and the sire of **WORLD K'S SHIGESHIGETANI**. He is known for both quality carcasses as well as passing strong maternal traits onto his daughters. His sire **MONJIRO** is one of the most famous of all Japanese sires and is a direct son of the famous **YASUMI DOI**. **HARUKI 2** is regarded as a very balanced Wagyu bull, with 56% TAJIMA, 19% SHIMANE, 13% ITOZAKURA and 6% KEDAKA genetics.



## WORLD K'S MICHIFUKU

SIRE **MONJIRO J11550**

YASUMIDOI J10328

HARUMI J1086409

TAYASU DOI J7208  
FUKUMUSUME J591035  
TAMORIDOI J7663  
KAZU J446542

DAM **MICHIKO J655635**

TANISHIGE 1526 - KURO KOH

MICHIFUKU J494290

YASUTANI DOI J472  
TETSUSHIGE 5 J101117  
DAI 13 KAMINAKA J10804

	WKSFM0164 / FB1615					4/8/1992					FREE					FULLBLOOD BLACK HORNED				
	GL	BW	200 Day	400 Day	600 Day	MCW	Milk	SC	CW	EMA	RF	RBV	MS	MF	WBI	SRI	FBTI	F1TI		
EBV	+0.6	+0.3	-3	-5	-9	0	-10	-2.9	-9	+10	+0.4	+0.3	+1.6	+0.45	\$198	\$243	\$173	\$181		
AVG	-0.1	+1.2	+11	+18	+24	+24	+0	-0.2	+20	+2.7	-0.3	+0.2	+1.2	+0.20	\$171	\$196	\$198	\$215		

### 5 UNITS

**WORLD K'S MICHIFUKU** is the direct son of **MONJIRO**, a son of **YASUMI DOI** by **HARUMI**, herself a daughter of **TAMORI DOI** by **TAFUKU DOI**, and **MICHIKO**, a daughter of **TANSHIGE** by **YASUTANI DOI** and **MICHIFUKU 494290**. **WORLD K'S MICHIFUKU** is the sire of reference for **BREEDPLAN** and is renowned for his carcass abilities. He still boasts top 1% marbling fineness and eye muscle area while also still possessing top 10% marble score performance. Furthermore, his sire, **MONJIRO**, is considered one of the top 10 Wagyu sires in Japan and is firmly footed in Kenichi Ono's "Top 100 Wagyu".





## TBR ITOZURUNAMI 4305B

SIRE ITOZURUDOI TF151

ITOKITATSURU J1081  
YASUHIME J433313

DAI 7 ITOZAKURA J65  
NISHIZURU J101266  
YASUMIDOI J10328  
FUJIHIME J311983

DAM CF 504

ITOSHIGENAMI  
HIKOKURA 1/10

SHIGESHIGENAMI J10632  
FUKUYUKI  
ITOMICHI J1158  
HIKOKURA 1/7

USAFB19603 / FB19603

3/28/2014

F11C

FULLBLOOD BLACK HORNED

	GL	BW	200 Day	400 Day	600 Day	MCW	Milk	SC	CW	EMA	RF	RBV	MS	MF	WBI	SRI	FBTI	F1TI
EBV	-0.9	-0.5	+8	+13	+18	+23	+1	-0.2	+19	+4.8	+0.6	+0.4	+1.7	+0.33	\$210	\$220	\$192	\$184
AVG	-0.1	+1.2	+11	+18	+24	+24	+0	-0.2	+20	+2.7	-0.3	+0.2	+1.2	+0.20	\$171	\$196	\$198	\$215

### 5 UNITS

**TBR ITOZURUNAMI 4305B** is the direct son of TAKEDA standout sire **ITOZURUDOI TF151**, himself pairing **ITOKITATSURU J1081**, a combination of **DAI 7 ITOZAKURA** and KEDAKA heritage through **NISHIZURU**, and **YASUHIME** herself a combination of **YASUMI DOI** and **KIKUTERU DOI** genetics. The dam of **TBR Itozurunami 4305B** is none other than **CF 504**, the direct daughter of linebred KUMANAMI sire **TF148 ITOSHIGENAMI** by **HIKOKURA 1/10**, herself pairing **ITOZAKURA** genetics through **ITOMICHI** with Kumanami and OKAYAMA line sire **DAI 3 KIYOHIME** by SHIMANE line Grand Champion dam **EZOKINTOU**.



## WORLD K'S SHIGESHIGETANI

SIRE WORLD K'S HARUKI 2

MONJIRO 11550  
SAKURA 2741638

YASUMI DOI  
HARUMI 1086409  
KENSHIN 902  
ITOHOME 3 545978

DAM WORLD K'S SUZUTANI

TANISHIGE 1526  
SUZUNAMI 472255

YASUTANI DOI  
TETSUSHIGE 5 101117  
SHIGESHIGENAMI 10632  
SUZUKO 289535

WKSFP1593 / FB2907

8/30/1994

FREE

FULLBLOOD BLACK HORNED

	GL	BW	200 Day	400 Day	600 Day	MCW	Milk	SC	CW	EMA	RF	RBV	MS	MF	WBI	SRI	FBTI	F1TI
EBV	-3.3	-2	+6	+10	+12	-1	-1	+0.1	+10	+10.5	-3.4	+2.1	+2.3	+0.14	\$239	\$262	\$250	\$244
AVG	-0.1	+1.2	+11	+18	+24	+24	+0	-0.2	+20	+2.7	-0.3	+0.2	+1.2	+0.20	\$171	\$196	\$198	\$215

### 3 UNITS

**WORLD K'S SHIGESHIGETANI** is the son of **WORLD K'S HARUKI 2** and **WORLD K'S SUZUTANI** pairing the heritage of "TOP 100 WAGYU" **MONJIRO**, KEDAKA influence through **KENSHIN** by **KENSEI** through **HARUMI**, and **TANSHIGE** by **YASUTANI DOI** with **SHIGESHIGENAMI** of the **KUMANAMI** line and **TAYASUDOI** through granddaughter **SUZUKO**. This potent combination of linebred **YASUMI DOI** line genetics paired with potent **KUMANAMI** blood while adding the outcross ability of **SAKURA 2** through the sire's line resulted in not only phenotypic excellence but predictable carcass performance that recently pushed his BREEDPLAN EBVs to top 1% in marble score and eye muscle area lending credence to his historical reputation in the U.S. as THE premier sire.



## TBR ITOSHIGEFUKU 9059W

SIRE ITOSHIGEFUJI

DAI 7 ITOZAKURA  
DAI 30 NOBORU J920752

ITOFUJI 483  
ITOMICHI  
DAI 10 NOBORU 3

DAM TF 713

KIMIFUKU 3  
HIKOKURA 1/10

TANIFUKU-DOI  
YUKIFUKU - J558707  
ITOMICHI  
HIKOKURA 1/7

USAFB11166 / FB11166

11/11/2009

FREE

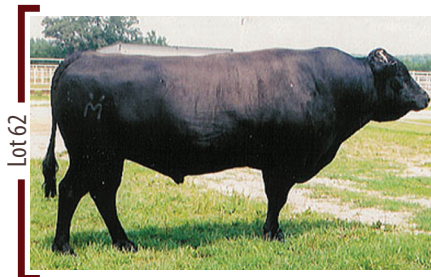
FULLBLOOD BLACK HORNED

	GL	BW	200 Day	400 Day	600 Day	MCW	Milk	SC	CW	EMA	RF	RBV	MS	MF	WBI	SRI	FBTI	F1TI
EBV	+0.1	+3.5	+15	+22	+42	+50	+5	-0.3	+36	-3.2	+1.9	-1	+0.6	+0.08	\$121	\$97	\$72	\$48
AVG	-0.1	+1.2	+11	+18	+24	+24	+0	-0.2	+20	+2.7	-0.3	+0.2	+1.2	+0.20	\$171	\$196	\$198	\$215

### 5 UNITS

**TBR ITOSHIGEFUKU 9059W** is sired by **ITOSHIGEFUJI TF147**, a linebred son of **ITOFUJI** by **DAI 30 NOBORU**, with heavy influences from ITOZAKURA and OKAYAMA genetics through **HIROTA** and **DAI 10 NOBORU**. As a result, **ITOSHIGEFUJI TF147** is one of the premier maternal bulls available from the foundation genetics. The dam of **9059W**, **TF 713**, is a direct daughter of **TANIFUKU DOI** son **KIMIFUKU 3** by **HIKOKURA 1/10**, herself pairing genetics from **ITOMICHI** and **DAI 3 KIYOHIME** of **KUMANAMI** and OKAYAMA heritage with the Zenkyo Grand Champion Cow **EZOKINTOU J11691**. **TBR 9059W** will upgrade maternal abilities and increase growth without sacrificing marbling.

# FROZEN GENETICS OFFERING



## WORLD K'S SANJIROU

SIRE **WORLD K'S MICHIFUKU**

MONJIRO 11550

MICHIKO 655635

DAM **WORLD K'S SUZUTANI**

TANISHIGE 1526

SUZUNAMI 472255

YASUMI DOI  
HARUMI 1086409  
TANISHIGE 1526  
MICHIFUKU 494290

YASUTANI DOI  
TETSUSHIGE 5 101117  
SHIGESHIGENAMI 10632  
SUZUKO 289535

WKSFP0100 / FB2501					6/28/1994					FREE				FULLBLOOD BLACK HORNED			
GL	BW	200 Day	400 Day	600 Day	MCW	Milk	SC	CW	EMA	RF	RBV	MS	MF	WBI	SRI	FBTI	F1TI
-1.3	-0.6	-2	-10	-16	-28	-8	-2.5	-22	+11	-3.9	+2.6	+1.3	+0.17	\$141	\$174	\$115	\$122
-0.1	+1.2	+11	+18	+24	+24	+0	-0.2	+20	+2.7	-0.3	+0.2	+1.2	+0.20	\$171	\$196	\$198	\$215

### 5 UNITS

**WORLD K'S SANJIROU** is sired by **WORLD K'S MICHIFUKU**, the son of **MONJIRO** who is famous throughout Japan and the world for his phenotypic excellence, frame score, and unsurpassed carcass performance ranking **MONJIRO** in Kenichi Ono's "Top 100 Wagyu." The dam of **WORLD K'S SANJIROU** is none other than original import **WORLD K'S SUZUTANI**, herself a pairing **YASUTANI DOI** son **TANISHIGE** and **KUMANAMI** line **SHIGESHIGENAMI** daughter **SUZUNAMI**.



## TF 152 KAMUI KAMUI

SIRE **M6 TAKARA YAMATO**

DAM **M5 KISARAGI**

PEDMTFL152 / B115					8/28/1991				FREE				FULLBLOOD BLACK HORNED				
GL	BW	200 Day	400 Day	600 Day	MCW	Milk	SC	CW	EMA	RF	RBV	MS	MF	WBI	SRI	FBT	F1T
+0.2	+1.0	+16	+12	+9	+4	+2		-6	+0.6	+1.0		-0.3		\$99	\$99	\$80	\$78
-0.1	+1.2	+11	+18	+24	+24	+0	-0.2	+20	+2.7	-0.3	+0.2	+1.2	+0.20	\$171	\$196	\$198	\$215

### 3 UNITS

**TF 152 KAMUI** is a **MISHIMA** bull which is the modern-day strain of what is believed to be the base of Wagyu genetics presently isolated on **MISHIMA** Island, Japan and regarded as a national treasure. This breed or line was never interbred with European breeds attributed to the **MEIJI** era and remains the only representation of the "mongrel" base from which all Wagyu are derived. The **MISHIMA** line is known for extreme marbling though possessing slower growth and slighter frames.





## TBR SHIGENAMINAMI 3024Z

SIRE **WORLD K'S SHIGESHIGETANI**

WORLD K'S HARUKI 2  
WORLD K'S SUZUTANI

MONJIRO 11550  
SAKURA 2741638  
TANISHIGE 1526  
SUZUNAMI 472255

DAM **IWG MS ITOSHIGENAMI 035X**

ITOSHIGENAMI  
CF504

SHIGESHIGENAMI 10632  
FUKUYUKI  
ITOSHIGENAMI  
HIKOKURA 1/10

TRIFH3024Z / FB19599					9/14/2012					FREE				FULLBLOOD BLACK HORNED			
GL	BW	200 Day	400 Day	600 Day	MCW	Milk	SC	CW	EMA	RF	RBY	MS	MF	WBI	SRI	FBTI	FTI
-0.1	+0.1	+7	+18	+22	+19	-3	-0.2	+17	+6.6	-0.5	+0.6	+2.7	+0.27	\$268	\$290	\$262	\$251
-0.1	+1.2	+11	+18	+24	+24	+0	-0.2	+20	+2.7	-0.3	+0.2	+1.2	+0.20	\$171	\$196	\$198	\$215

### 5 UNITS

**TBR SHIGENAMINAMI 3024Z** pairs **WORLD K'S SHIGESHIGETANI**, a direct son of **WORLD K'S HARUKI 2** and **WORLD K'S SUZUTANI** with influences from **MONJIRO**, **TANISHIGE**, **KEDAKA**, and **KUMANAMI** heritage through **SUZUNAMI**, with **IWG MS ITOSHIGENAMI 035X**, a daughter of **ITOSHIGENAMI TF148** by **CF 504**, herself a daughter of **ITOSHIGENAMI TF148** by **HIKOKURA 1/10** who pairs **DAI 7 ITOZAKURA** through **ITOMICHI**, **KUMANAMI** and **OKAYAMA** blood through **DAI 3 KIYOHIME**, and **SHIMANE Zenkyo Grand Champion cow EZOKINTOU J11691**.



## TBR KIKUTNAMI 4051A

SIRE **TF KIKUTSURUDOI**

TANIFUKU-DOI  
YASUTSURI 509605

YASUTANI DOI  
KIKUTSURI 978542  
YASUTANI DOI  
JAPANESE COW (BLACK)

DAM **IWG MS ITOSHIGENAMI 035X**

ITOSHIGENAMI  
CF504

SHIGESHIGENAMI 10632  
FUKUYUKI  
ITOSHIGENAMI  
HIKOKURA 1/10

TRIFJ4051A / FB19600					11/23/2013					IARSC				FULLBLOOD BLACK HORNED			
GL	BW	200 Day	400 Day	600 Day	MCW	Milk	SC	CW	EMA	RF	RBY	MS	MF	WBI	SRI	FBTI	FTI
+0.5	-0.3	+7	+18	+24	+18	+2	-0.5	+31	+0.7	-0.1	+0.3	+1.5	+0.26	\$174	\$173	\$148	\$135
-0.1	+1.2	+11	+18	+24	+24	+0	-0.2	+20	+2.7	-0.3	+0.2	+1.2	+0.20	\$171	\$196	\$198	\$215

### 5 UNITS

**TBR KIKUTNAMI 4051A** is the direct son of **KIKUTSURUDOI TF146**, a product of linebred **YASUMI DOI** and **KIKUTSURI J978542**, the "**Hyogo cow**," through **TANIFUKU DOI** and **YASUTSURI**. The dam of **4051A** is **IWG MS ITOSHIGENAMI 035X**, a daughter of **ITOSHIGENAMI TF148** by **CF 504**, herself a daughter of **ITOSHIGENAMI TF148** by **HIKOKURA 1/10** who pairs **DAI 7 ITOZAKURA** through **ITOMICHI**, **KUMANAMI** and **OKAYAMA** blood through **DAI 3 KIYOHIME**, and **SHIMANE Zenkyo Grand Champion cow EZOKINTOU J11691**.



## TBR YASUKANEKO 1074X

SIRE **JVP FUKUTSURI-068**

DAI 2 YASUTSURI 774  
TERUYASU 649663

YASUMI DOI  
KIKUTSURI 978542  
KIKUTSURI DOI  
YASUTSURI 509605

DAM **TBR UMEKO 8020U**

WORLD K'S SANJIROU  
BR MS TAKAZAKURA 0652

WORLD K'S MICHIFUKU  
WORLD K'S SUZUTANI  
WORLD K'S TAKAZAKURA  
JVP MS FUKUKANE 05E

TRIFF1074X / FB12362					10/24/2010					IARSC				FULLBLOOD BLACK HORNED			
GL	BW	200 Day	400 Day	600 Day	MCW	Milk	SC	CW	EMA	RF	RBY	MS	MF	WBI	SRI	FBTI	FTI
+0.1	-0.7	-1	+3	+6	-6	-1	-1.7	-5	+1.0	-0.1	+0.5	+0.5	+0.10	\$79	\$88	\$57	\$54
-0.1	+1.2	+11	+18	+24	+24	+0	-0.2	+20	+2.7	-0.3	+0.2	+1.2	+0.20	\$171	\$196	\$198	\$215

### 5 UNITS

**TBR YASUKANEKO 1074X** is sired by **JVP FUKUTSURI 068**, a product of **YASUMI DOI** and **KIKUMI DOI** sandwich breeding with further ties to **KIKUTSURI J978542** on both the sire and dam's lines. The dam of **1074X**, **TBR UMEKO 8020U**, is the daughter of **WORLD K'S SANJIROU** by **BR MS TAKAZAKURA 0652** pairing genetics from **WORLD K'S TAKAZAKURA**, **JVP FUKUTSURI 068**, **YASUKANE J1682**, and **YOSHIHIME 3** by **ITOFUJI**.

# FROZEN GENETICS OFFERING



## ITOMORITAKA J2703 HONGEN

SIRE **ITOHIRASHIGE J1555**

ITOKITATSURU J1081  
HIRASHIGEKIYOSHI J112938

DAI 7 ITOZAKURA J65  
NISHIZURU J101266  
KITAKEDAKA J1  
YASUKO J24182

DAM **DAI 6 OEFUJII J565554 - KURO KOH**

KEDAKAFUJI J1180  
OOE J101310 KURO KOH

KEDAKAFUJI J178  
KOCHIKUSA J130369  
HAKUHOU J92

	IMJFAJ2703 / FB681					11/17/1992				CHSC				FULLBLOOD BLACK HORNED				
	GL	BW	200 Day	400 Day	600 Day	MCW	Milk	SC	CW	EMA	RF	RBV	MS	MF	WBI	SRI	FBTI	FITI
EBV	-0.3	+3.7	+28	+39	+55	+38	+10	+3.8	+21	+3.3	+4.5	+0.6	-1	-0.04	\$110	\$68	\$75	\$39
AVG	-0.1	+1.2	+11	+18	+24	+24	+0	-0.2	+20	+2.7	-0.3	+0.2	+1.2	+0.20	\$171	\$196	\$198	\$215

### 5 UNITS

**ITOMORITAKA J2703** was sired by **ITOHIRASHIGE J1555** pairing genetics from **ITOKITATSURU J1081**, also the sire of **ITOZURUDOI TF151**, with **HIRASHIGEKIYOSHI**, a granddaughter of **KEDAKA** through **KITAKEDAKA**. The dam of **J2703** was **DAI 6 OEFUJI**, a daughter of **KEDAKA** line sire **DAI 5 KEDAKAFUJI** and **TOTTORI** line dam **OOE**, a granddaughter of **YUHO** by **DAI 33 TOUHOU**, himself a great grandson of **EIKOU**. Though historically regarded as a **FUJIYOSHI** bull, **ITOMORITAKA J2703** is steeped in **KEDAKA** and **TOTTORI** heritage with a touch of **ITOZAKURA** blood. **J2703** is a **BREEDPLAN** trait leader for growth, maternal qualities, and yield.



## TBR KIKUTSURU DOI 4053A

SIRE **KIKUTSURUDOI TF146**

TANIFUKU DOI J1606  
YASUTSURU J509605

YASUTANI DOI J472  
KIKUTSURU J978542  
YASUTANI DOI J472  
KIKUTURU 8 J311980

DAM **TBR TANITOFUKU 1076X**

KIMIFUKU TF 726  
TF 705

KIMIFUKU 3  
CHIYOTAKE 10  
KIMIFUKU 3  
HIKOKURA 1/12

	TRIFJ4053A / FB19601					11/27/2013				IARSC					FULLBLOOD BLACK HORNED				
	GL	BW	200 Day	400 Day	600 Day	MCW	Milk	SC	CW	EMA	RF	RBV	MS	MF	WBI	SRI	FBTI	FITI	
EBV	0	-1.2	-3	-1	-2	-9	0	-1.6	-2	-0.4	-0.5	-0.4	+1.0	+0.14	\$74	\$90	\$83	\$87	
AVG	-0.1	+1.2	+11	+18	+24	+24	+0	-0.2	+20	+2.7	-0.3	+0.2	+1.2	+0.20	\$171	\$196	\$198	\$215	

### 5 UNITS

This semen lot is from one of the greatest bulls ever bred at Triangle B. **TBR KIKUTSURU DOI 4053A** is a direct son of **TF KIKUTSURU DOI 146** over **TBR TANITOFUKU 1076X**, our line bred **KIMIFUKU 3** daughter. **KIMIFUKU 3 90 KURO 1172** born May 8, 1990 was the best marbling bull in Mr. Shogo Takeda's history to date. Average carcass weights were 963 lbs and A5 ratio was 100% (25 samples). **KIMIFUKU 3** is a combination of **ITSUHIME**, **KIKUTSURU**, and **MITSUHUKU** dams which Mr. Takeda knew would make the best **TAJIMA NAKA-DOI** genetics. **TF KIKUTSURU DOI 146's** sire is the great **TANIFUKU DOI**, the number one bull from the **HYOGO Prefecture** (home of Kobe beef). His paternal grand dam is **KIKUTSURU**, the **HYOGO Cow** that is famous for putting size in the **TAJIMA** line. **TF 146's** dam is **YASUTSURU**, a half sister to **TANIFUKU DOI**. **4053A** is 79% **TAJIMA**, 15% **ITOZAKURA**, and 6% **SHIMANE**.



An animal's breeding value is its genetic merit, half of which will be passed on to its progeny. While we will never know the exact breeding value, for performance traits it is possible to make good estimates. These estimates are called Estimated Breeding Values (EBVs). In the calculation of EBVs, the performance of individual animals within a contemporary group is directly compared to the average of other animals in that group. A contemporary group consists of animals of the same sex and age class within a herd, run under the same management conditions and treated equally. Indirect comparisons are made between animals reared in different contemporary groups, through the use of pedigree links between the groups. The absolute value of any EBV is not critical, but rather the differences in EBVs between animals. Particular animals should be viewed as being "above or below breed average" for a particular trait.

**Gestation Length EBV** (days) is an estimate of the time from conception to the birth of the calf and is based on Artificial Insemination and hand mating records. Lower (negative) Gestation Length EBVs indicate shorter gestation length and therefore easier calving and increased growth after birth.

**Birth Weight EBV** (kg) is based on the measured birth weight of progeny, adjusted for dam age. The lower the value the lighter the calf at birth and the lower the likelihood of a difficult birth. This is particularly important when selecting sires for use over heifers.

**200-Day Growth EBV** (kg) is calculated from the weight of progeny taken between 80 and 300 days of age. Values are adjusted to 200 days and for age of dam. This EBV is the best single estimate of an animal's genetic merit for growth to early ages.

**400-Day Weight EBV** (kg) is calculated from the weight of progeny taken between 301 and 500 days of age, adjusted to 400 days and for age of dam. This EBV is the best single estimate of an animal's genetic merit for yearling weight.

**600-Day Weight EBV** (kg) is calculated from the weight of progeny taken between 501 and 900 days of age, adjusted to 600 days and for age of dam. This EBV is the best single estimate of an animal's genetic merit for growth beyond yearling age.

**Mature Cow Weight EBV** (kg) is based on the cow weight when the calf is weighed for weaning, adjusted to 5 years of age. This EBV is an estimate of the genetic difference in cow weight at 5 years of age and is an indicator of growth at later ages and potential feed maintenance requirements of the females in the breeding herd. Steer breeders wishing to grow animals out to a larger weight may also use the Mature Cow Weight EBV.

**Milk EBV** (kg) is an estimate of an animal's milking ability. For sires, this EBV indicates the effect of the daughter's milking ability, inherited from the sire, on the 200-day weights of her calves. For dams, it indicates her milking ability.

**Scrotal Size EBV** (cm) is calculated from the circumference of the scrotum taken between 300 and 700 days of age and adjusted to 400 days of age. This EBV is an estimate of an animal's genetic merit for scrotal size. There is also a small negative correlation with age of puberty in female progeny and therefore selection for increased scrotal size will result in reduced age at calving of female progeny.

**Carcase Weight EBV** (kg) is based on abattoir carcase records and is an indicator of the genetic differences in carcase weight at the standard age of 990 days.

**Eye Muscle Area EBV** (sq cm) is calculated from measurements from live animal ultrasound scans and from abattoir carcase data, adjusted to a standard 420kg carcase. This EBV estimates genetic differences in eye muscle area at the 12/13th rib site of a 420kg dressed carcase. More positive EBVs indicate better muscling on animals. Sires with relatively higher Eye Muscle Area EBVs are expected to produce better muscled and higher percentage yielding progeny at the same carcase weight than will sires with lower Eye Muscle Area EBVs.

**Rump Fat EBV** (mm) is calculated from measurements of subcutaneous fat depth at the P8 rump site (from live animal ultrasound scans and from abattoir carcasses) and is adjusted to a standard 420kg carcase. This EBV is an indicator of the genetic differences in fat distribution on a standard 420kg carcase. Sires with low, or negative, fat EBV are expected to produce leaner progeny at any particular carcase weight than will sires with higher EBVs.

**Retail Beef Yield EBV** (%) indicates genetic differences between animals for retail yield percentage in a standard 420kg carcase. Sires with larger EBVs are expected to produce progeny with higher yielding carcasses.

**Marble Score EBV** is an estimate of the genetic difference in the Aus-Meat Marble Score in a 420kg carcase. Larger more positive values are favourable.

**Marble Fineness EBV** is an estimate of the genetic difference in the Marbling Fineness Index as measured by the Japanese Digital Image Camera. Sires with higher EBVs are expected to produce progeny with higher Marbling Fineness Index.



LIVESTOCK MARKETING & PROMOTION  
c/o James Danekas & Associates, Inc.  
P.O. Box 8629  
Woodland, CA 95776

PRESORTED  
FIRST CLASS  
U.S. POSTAGE  
**PAID**  
Tucson, AZ  
Permit No. 271

**Females | Bulls | Frozen Genetics**



**TRIANGLE B RANCH**  
WAGYU CATTLE

**LiveAuctions**.TV  
2.0